



OPIP Tools for Primary Care Practices to Support Enhanced Follow-Up to Developmental Screening

This toolkit provide copies of the specific tools that OPIP developed and customized for the four pilot primary care practices. These tools were modified and adapted based on learnings from implementation and are specific to the set of services available at the time of the CPCCO funded project, which ended in **July 2019**. Given variations in available services by county and by primary care site, the specific customized versions of the tools are provided.

Table of Contents	Page Number
Tool #1: County Level Asset Maps – Services Available in Each Community to Provide Follow-up to Developmental Screening (Summary as of July 2019)	2
Summary Tri-County Asset Map Across Clatsop, Columbia and Tillamook	3
Clatsop	5
Columbia	6
Tillamook	7
Tool #2: Follow-Up to Developmental Screening Medical Decision Tree	8
Clatsop	9
Columbia	11
Tillamook	13
Tool #3: Parent Education/Shared Decision Making Tool to Support Parent Understanding of Services	15
Clatsop – CMH Astoria Pediatrics	16
Columbia – OHSU Scappoose	18
Tillamook County Community Health Center	19
Adventist Women’s and Families	21
Tool #4: Sample 36 Hour Phone Follow-Up Script	22
Tool # 5: Summary of Services Available for Publicly Insured Children via CPCCO Contracts	24



Tool #1: County Asset Maps

The asset maps were developed by OPIP after conducted stakeholder interview with over 80 people in the communities to understand which services exist, the specific children that they serve and eligibility criterion they may need to use and other information about capacity.

These asset maps are specific to and accurate to the time at which OPIP conducted the interviews. These will need to be updated periodically as service available and service capacity will change.

The Asset Maps are meant to illustrate pathways and secondary pathways from screening to services in a way that makes the information easy to follow and digest at a community level.

The Asset Map has three key parts:

Part 1: Entities conducting developmental screening and identifying children at-risk for developmental, behavioral and social delays

Part 2: Follow-up pathways for children identified at-risk for developmental, behavioral and/or social delays on the developmental screening tool

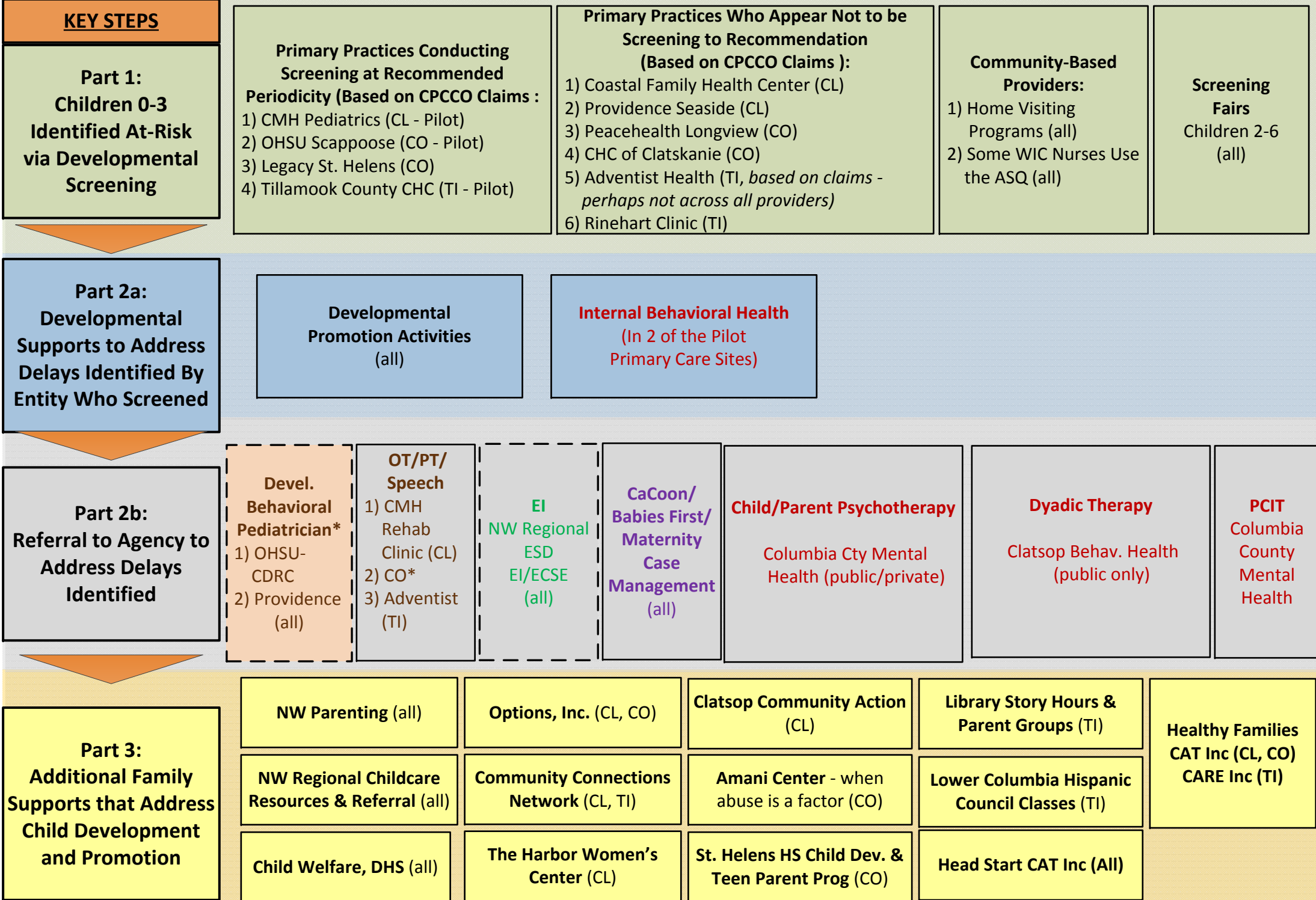
- **Part 2a:** Developmental supports provided by entity that screened that addresses identified delays
- **Part 2b:** Agencies to which the screening entity can refer at-risk children

Part 3: Additional family supports that address child development and promotion

Tools Developed Through This Project Provided On the Following Pages:

Summary Tri-County Asset Map	Page 3
Clatsop County	Page 5
Columbia County	Page 6
Tillamook County	Page 7

PATHWAYS FOR DEVELOPMENTAL SCREENING OF CHILDREN 0-3 & REFERRAL FOR CHILDREN IDENTIFIED AT-RISK IN CLATSOP, COLUMBIA & TILLAMOOK COUNTIES



LEGEND

COLOR CODING BY SERVICE TYPE

Medical & Therapy Services:

- **Developmental & Behavioral Pediatrician:** Referral is for an Evaluation
- **Private OT/PT & Speech Therapy**

Early Intervention: Referral is for an Evaluation

CaCoon/Babies First

Infant/Early Childhood Mental Health, including:

- **Internal behavioral health within primary care**
- **Mental Health – Referral is for an assessment and identification of services:**
 - Child Psychotherapy
 - Parent and Child Interaction Therapy
 - Dyadic Therapy

Referral to evaluation, not necessarily services
 *Located outside the community
 CL = Clatsop, CO = Columbia, TI = Tillamook

NOTE: Childcare sites not included in map as ages served puts them out of scope of the project. Numerous childcare sites are screening in this community.

**Part 2b – Expanded View:
Referral to Agency to Address Delays Identified**

	Devel. Behavioral Pediatrician	OT/PT/ Speech	EI	CaCoon/ Babies First/ Maternity Case Management	Healthy Families	Dyadic Therapy	Child/Parent Psychotherapy	Parent & Child Interaction Therapy
--	--------------------------------------	------------------	----	---	---------------------	-------------------	-------------------------------	--

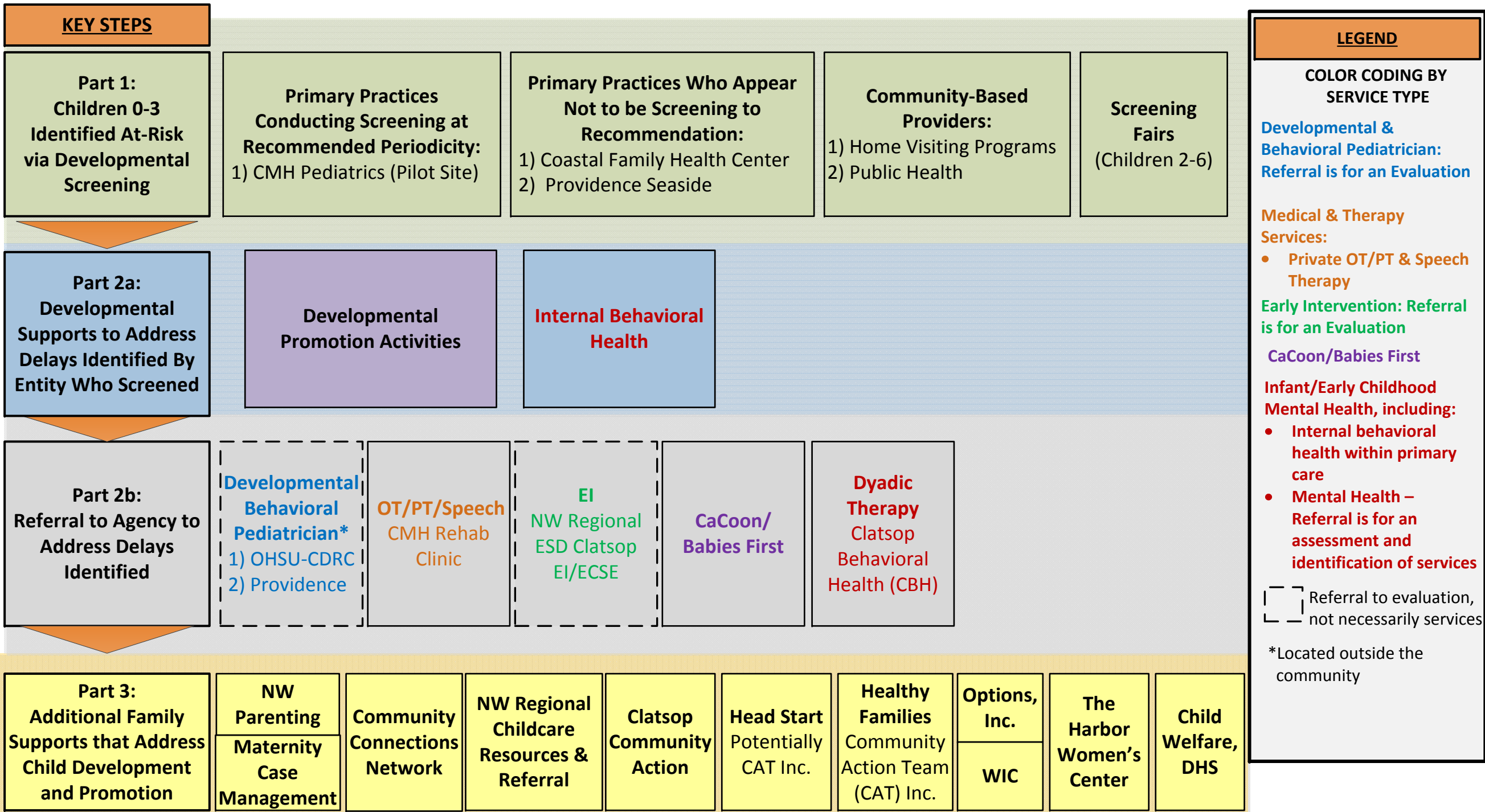
Clatsop	X	Yes	Yes	Yes	Yes	Yes	X	X
----------------	----------	-----	-----	-----	-----	-----	----------	----------

Columbia	X	X	Yes	Yes	Yes	Yes	Yes	Yes
-----------------	----------	----------	-----	-----	-----	-----	-----	-----

Tillamook	X	Yes	Yes	Yes	Yes	Yes	X	X
------------------	----------	-----	-----	-----	-----	-----	----------	----------

Outside Community	OHSU CDRC Providence							
------------------------------	-------------------------	--	--	--	--	--	--	--

PATHWAY FOR DEVELOPMENTAL SCREENING OF CHILDREN 0-3 & REFERRAL FOR CHILDREN IDENTIFIED AT-RISK IN CLATSOP COUNTY



NOTE: Childcare sites not included in map as ages served puts them out of scope of the project. Numerous childcare sites are screening in this community.

PATHWAY FOR DEVELOPMENTAL SCREENING & REFERRAL FOR CHILDREN 0-3 IDENTIFIED AT-RISK IN COLUMBIA COUNTY

KEY STEPS

<p>Part 1: Children 0-3 Identified At-Risk via Developmental Screening</p>	<p>Primary Practices Conducting Screening at Recommended Periodicity: 1) OHSU Scappoose (Pilot Site) 2) Legacy St. Helens</p>	<p>Primary Practices Who Appear Not to be Screening to Recommendation: 1) Peacehealth Longview 2) CHC of Clatskanie</p>	<p>Community-Based Providers: 1) Home Visiting Programs 2) Public Health</p>	<p>Screening Fairs (Children 2-6)</p>
---	--	--	---	--

<p>Part 2a: Developmental Supports to Address Delays Identified By Entity Who Screened</p>	<p>Developmental Promotion Activities</p>	<p>Potential Internal Behavioral Health</p>
---	--	--

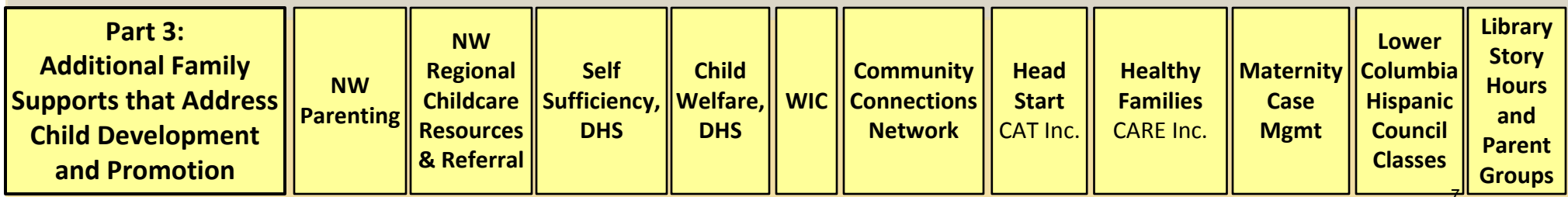
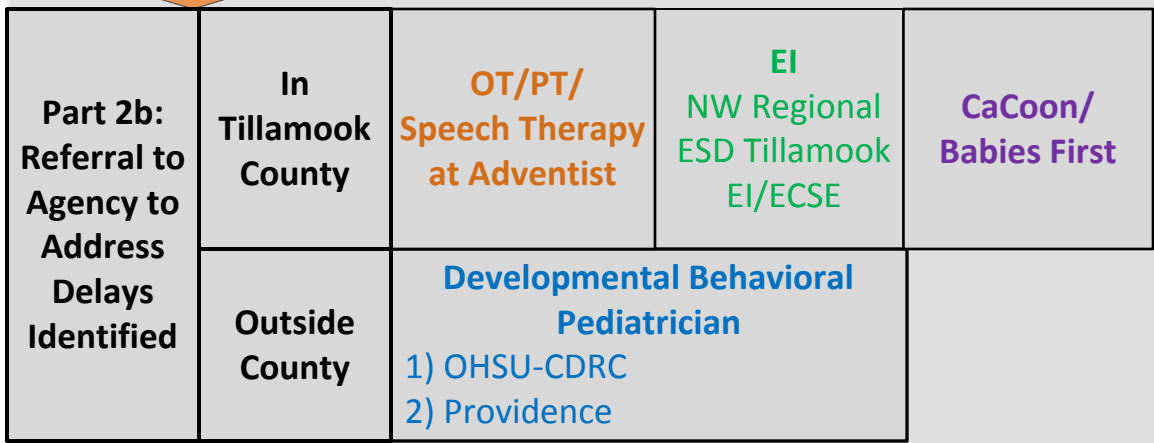
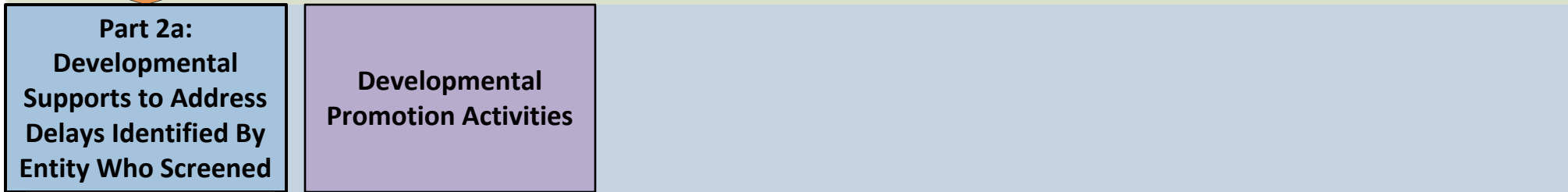
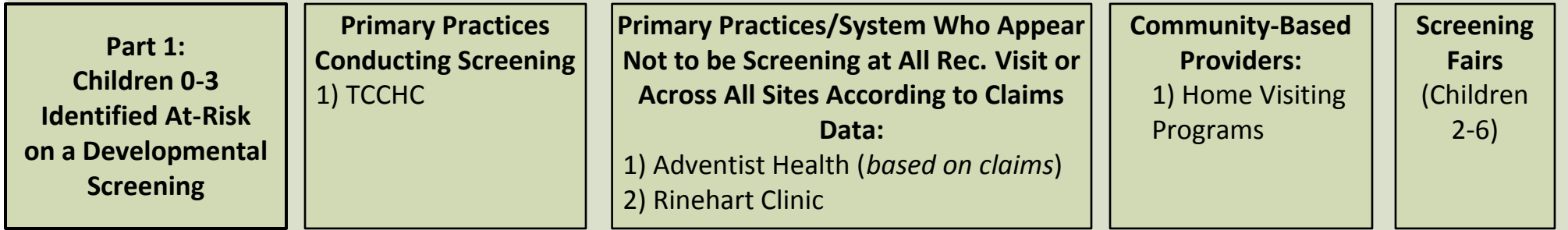
<p>Part 2b: Referral to Agency to Address Delays Identified</p>	<p>In Columbia County</p>	<p>EI NW Regional ESD Columbia EI/ECSE</p>	<p>Babies First</p>	<p>Child/Parent Psychotherapy/ PCIT Columbia County Mental Health (CCMH)</p>
	<p>Outside Columbia County</p>	<p>Developmental Behavioral Pediatrician 1) OHSU-CDRC 2) Providence</p>	<p>OT/PT/ Speech Therapy</p>	

<p>Part 3: Additional Family Supports that Address Child Development and Promotion</p>	<p>On Community Action Team (CAT) Contact Us Platform http://nworheadstart.org/ index.html</p>	<p>NW Parenting</p>	<p>NW Regional Childcare Resources & Referral at 211</p>	<p>Maternity Case Management</p>	<p>Healthy Families</p>	<p>St. Helens High School Child Development and Teen Parent Program</p>	<p>WIC</p>	<p>Head Start</p>
	<p>Other Local Agencies that Provide Supports for Specific Families that Referrals and/or Communication About Child's Development May be Helpful</p>	<p>Child Welfare, DHS</p>	<p>Options, Inc. (Behavioral Health and family preservation services)</p>	<p>Amani Center (when abuse is a factor)</p>				

NOTE: Childcare sites not included in map as ages served puts them out of scope of the project. Numerous childcare sites are screening in this community.

PATHWAY FOR DEVELOPMENTAL SCREENING & REFERRAL FOR CHILDREN 0-3 IDENTIFIED AT-RISK IN TILLAMOOK COUNTY

KEY STEPS





Tool #2: Follow-Up to Developmental Screening Medical Decision Tree

The **Follow-Up to Developmental Screening Medical Decision Tree** is meant to provide the primary care provider with a summary of factors to consider related to the child’s developmental delay and other risk factors and then to outline the best match of community-based services. OPIP conducted a robust training that provided a detailed overview and instructions on how to interpret and use the medical decision tree.

This tool is a conceptual model that may be adapted and used within other communities. It should not and is not intended to be used as a replacement of professional medical advice. Rather, it meant to help support the primary care provider in thinking about common factors and decision points when considering referrals and in being customized to the community it is meant to provide “dot connection” of local resources that would be valuable.

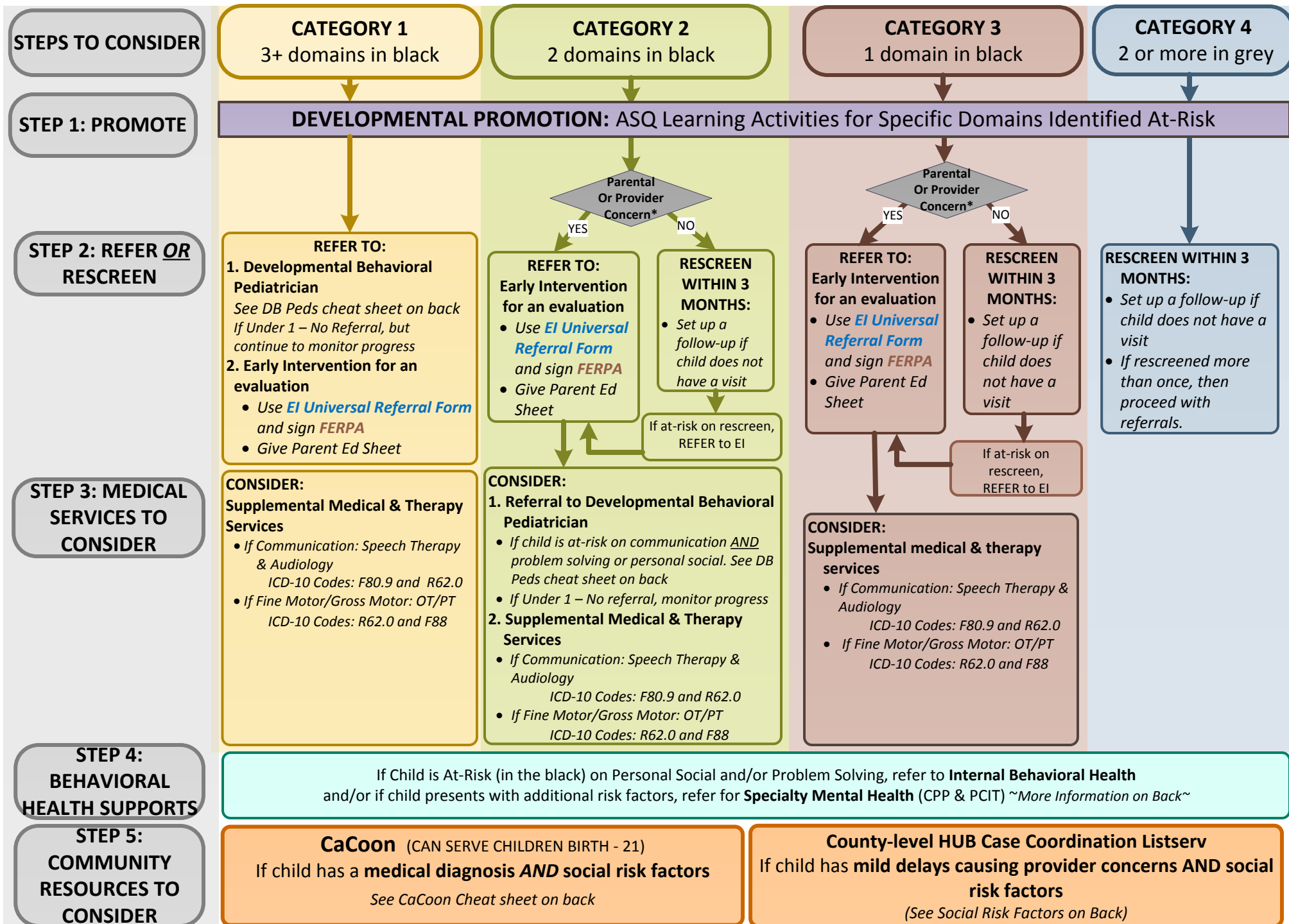
The decision tree is a two page document that was printed Front-to-Back for the primary care practices:

- The front page of the decision tree provides overall guidance and directions about the best match follow-up recommended.
- The back page provides more targeted and detailed information about specific referrals pathways.

Tools Developed Through This Project Provided On the Following Pages:

Clatsop County and specific to CMH – Pediatrics	Page 9
Columbia County and specific to OHSU-Scappoose	Page 11
Tillamook County and specific for Adventist and TCCHC	Page 13

FOLLOW-UP TO DEVELOPMENTAL SCREENINGS CONDUCTED IN CLATSOP COUNTY IN FIRST 3 YEARS: MEDICAL DECISION TREE



CaCOON CHEAT SHEET:

Info about program: <https://www.ohsu.edu/xd/outreach/occyshn/programs-projects/cacoon.cfm>

Medical Diagnosis or Medical Risk Factors



Social and Family Factors to Consider

- Feels Depressed or Overwhelmed
- Isolation/Lack of Support
- Support with Parenting/Lack of Parenting Skills
- Parent has Disability
- Teen/Young Parent
- First Time Parent
- Newly Pregnant needing assistance
- Tobacco Use
- Domestic Violence (present or history of)
- Alcohol/Drug Use
- Lack of Food/ Clothing/Housing
- Incarceration/Probation
- Low Income
- Migrant/Seasonal Worker
- Unemployed
- Homeless
- Receives TANF/SSI/SNAP
- DHS Involvement

Developmental Pediatrician Referral Cheat Sheet:

Child in **the BLACK** on the Communication domain
+
Personal-Social domain or Problem Solving domain

OR

- If the child is 'In the BLACK' on 2 or more domains and has any of the following presenting concerns:**
- Kids who are not progressing in services as expected or recent increase in symptoms
 - Kids who have challenging behaviors with inadequate response to behavioral interventions or medication.
 - Kids with secondary medical issues that are not responding to usual treatments (including feeding and nutrition)
 - Kids who may be experiencing traumatic events

Adverse Childhood Experiences

Adverse childhood experiences (ACEs) are stressful or traumatic events, including abuse and neglect. They may also include household dysfunction such as witnessing domestic violence or growing up with family members who have substance use disorders. ACEs are strongly related to the development and prevalence of a wide range of health problems throughout a person's lifespan, including those associated with substance misuse.

ACEs include:

- Physical abuse
- Sexual abuse
- Emotional abuse
- Physical neglect
- Emotional neglect
- Mother treated violently
- Substance misuse within household
- Household mental illness
- Parental separation or divorce
- Incarcerated household member

<https://www.samhsa.gov>

BEHAVIORAL HEALTH SUPPORTS

If child is "in black" on Personal Social and/or Problem Solving

- Internal Behavioral Health referral**
Example of follow-up steps by IBH staff.
- **Additional screening of child's development (ASQ-SE, Pediatric Symptom Checklist)**
 - **Understand parental frustration**
 - **Understand child risk factors**

Concerns such as oppositional, aggressive, overactive or shy/anxious behaviors, significant sleep, feeding, self-soothing, adjusting to new situations, or irritability concerns

And/ Or

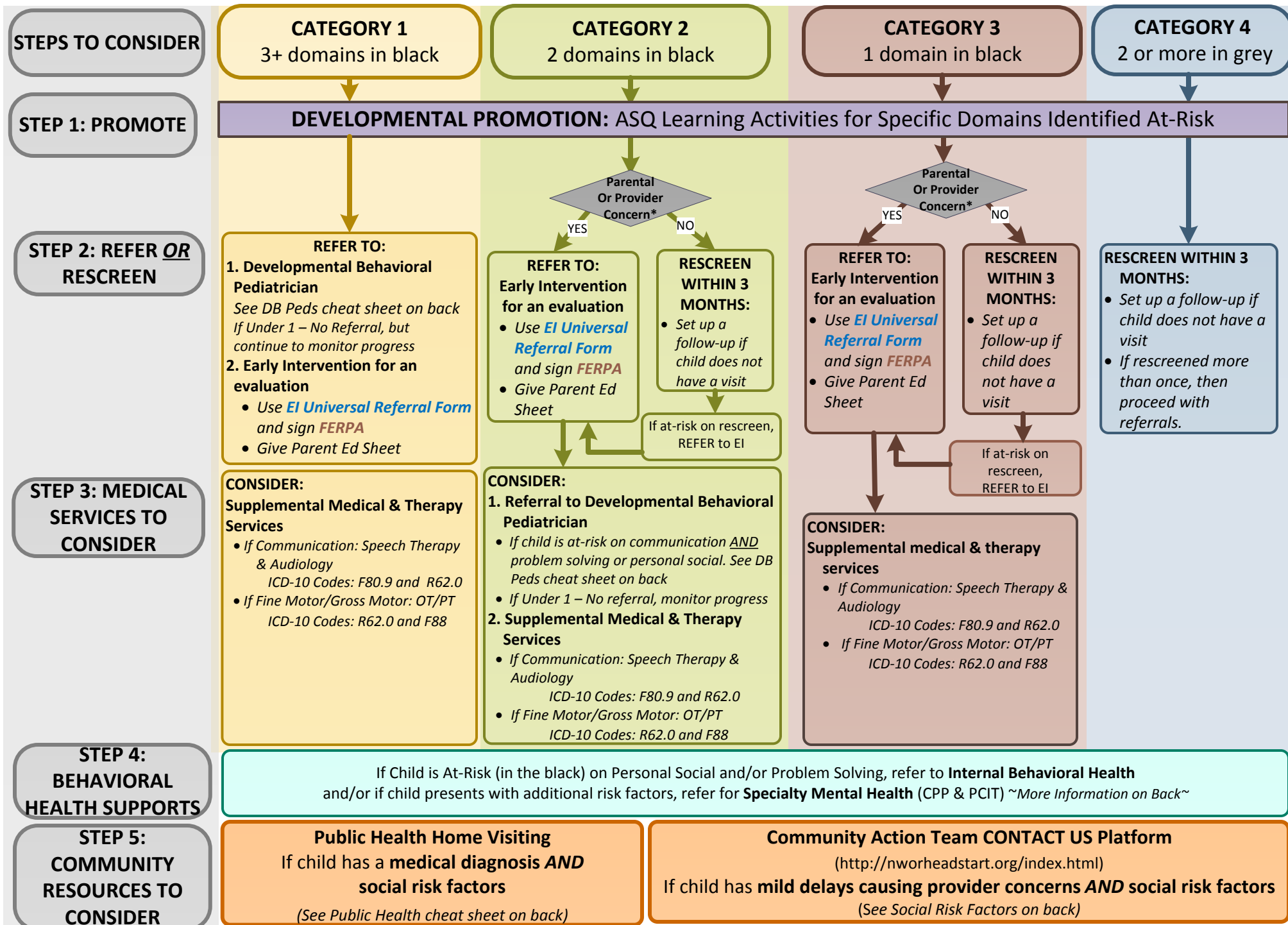
Exposure to Adverse Childhood Events (ACEs) in Family Environment

Consider External Referral to Mental Health for Child Parent Psychotherapy (CPP), Parent Child Interaction Therapy (PCIT), and Other Services

If Child has:

CONSIDER: USE OF EARLY CHILDHOOD MENTAL HEALTH DX CODES

FOLLOW-UP TO DEVELOPMENTAL SCREENINGS CONDUCTED IN COLUMBIA COUNTY IN FIRST 3 YEARS: MEDICAL DECISION TREE



**Public Health Home Visiting
CHEAT SHEET:**

Medical Diagnosis or Medical Risk Factors



Social and Family Factors to Consider

- Feels Depressed or Overwhelmed
- Isolation/Lack of Support
- Support with Parenting/Lack of Parenting Skills
- Parent has Disability
- Teen/Young Parent
- First Time Parent
- Newly Pregnant needing assistance
- Tobacco Use
- Domestic Violence (present or history of)
- Alcohol/Drug Use
- Lack of Food/ Clothing/Housing
- Incarceration/Probation
- Low Income
- Migrant/Seasonal Worker
- Unemployed
- Homeless
- Receives TANF/SSI/SNAP
- DHS Involvement

**Developmental Pediatrician Referral
Cheat Sheet:**

Child in **the BLACK** on the Communication domain
+
Personal-Social domain or Problem Solving domain

OR

If the child is 'In the BLACK' on 2 or more domains and has any of the following presenting concerns:

- Kids who are not progressing in services as expected or recent increase in symptoms
- Kids who have challenging behaviors with inadequate response to behavioral interventions or medication.
- Kids with secondary medical issues that are not responding to usual treatments (including feeding and nutrition)
- Kids who may be experiencing traumatic events

Adverse Childhood Experiences

Adverse childhood experiences (ACEs) are stressful or traumatic events, including abuse and neglect. They may also include household dysfunction such as witnessing domestic violence or growing up with family members who have substance use disorders. ACEs are strongly related to the development and prevalence of a wide range of health problems throughout a person's lifespan, including those associated with substance misuse.

ACEs include:

- Physical abuse
- Sexual abuse
- Emotional abuse
- Physical neglect
- Emotional neglect
- Mother treated violently
- Substance misuse within household
- Household mental illness
- Parental separation or divorce
- Incarcerated household member

<https://www.samhsa.gov>

BEHAVIORAL HEALTH SUPPORTS

If child is "in black" on Personal Social and/or Problem Solving

Internal Behavioral Health referral
Example of follow-up steps by IBH staff.

- **Additional screening of child's development (ASQ-SE, Pediatric Symptom Checklist)**
- **Understand parental frustration**
- **Understand child risk factors**

Concerns such as oppositional, aggressive, overactive or shy/anxious behaviors, significant sleep, feeding, self-soothing, adjusting to new situations, or irritability concerns

And/
Or

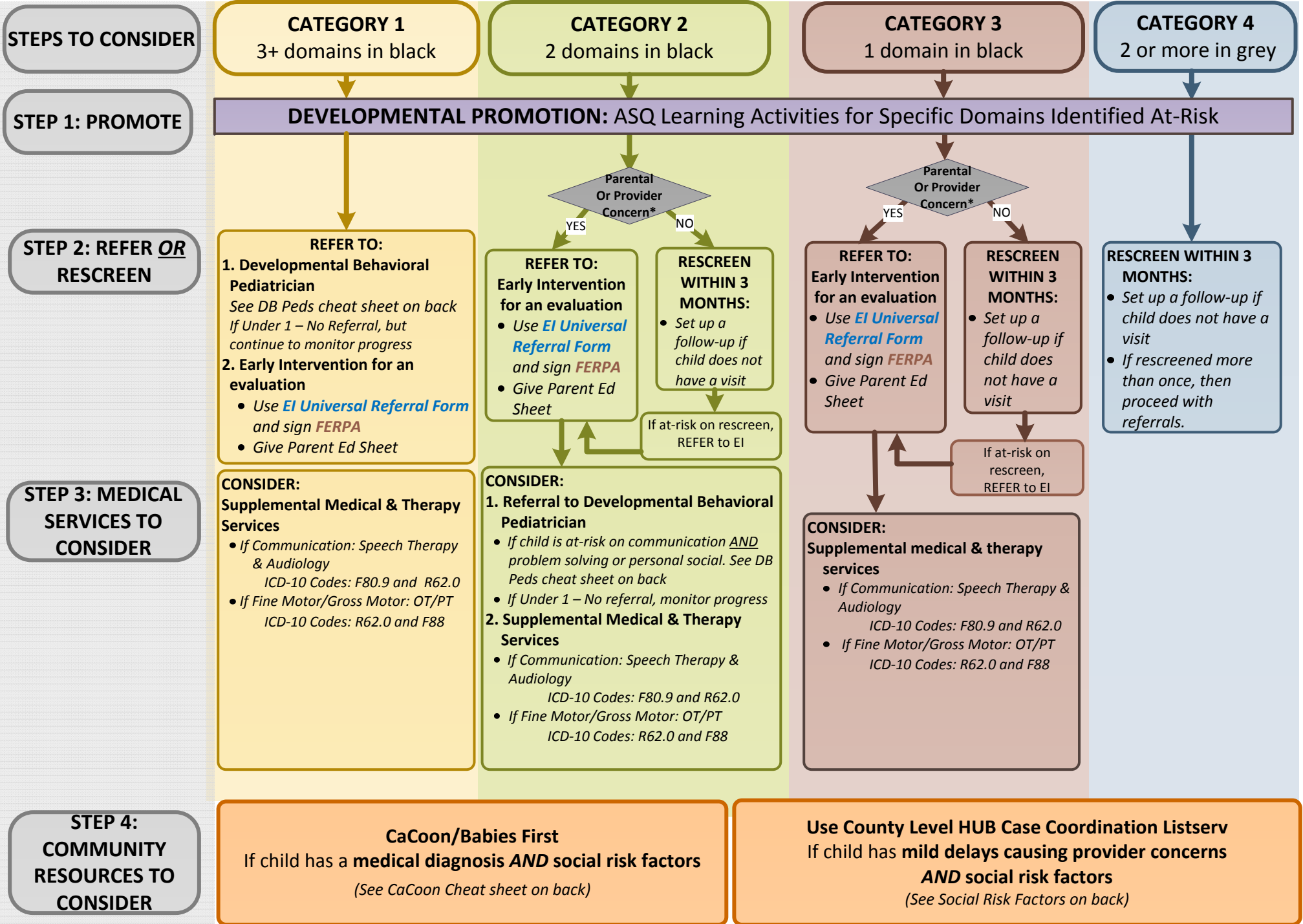
Exposure to Adverse Childhood Events (ACEs) in Family Environment

Consider External Referral to Mental Health for Child Parent Psychotherapy (CPP), Parent Child Interaction Therapy (PCIT), and Other Services

If Child has:

CONSIDER: USE OF EARLY CHILDHOOD MENTAL HEALTH DX CODES

FOLLOW-UP TO DEVELOPMENTAL SCREENINGS CONDUCTED IN TILLAMOOK COUNTY IN FIRST 3 YEARS: MEDICAL DECISION TREE



CaCOON CHEAT SHEET:

Info about program: <https://www.ohsu.edu/xd/outreach/occyshn/programs-projects/cacoon.cfm>

Medical Diagnosis or Medical Risk Factors



Social and Family Factors to Consider

- Feels Depressed or Overwhelmed
- Isolation/Lack of Support
- Support with Parenting/Lack of Parenting Skills
- Parent has Disability
- Teen/Young Parent
- First Time Parent
- Newly Pregnant needing assistance
- Tobacco Use
- Domestic Violence (present or history of)
- Alcohol/Drug Use
- Lack of Food/ Clothing/Housing
- Incarceration/Probation
- Low Income
- Migrant/Seasonal Worker
- Unemployed
- Homeless
- Receives TANF/SSI/SNAP
- DHS Involvement

Developmental Pediatrician Referral Cheat Sheet:

Child in **the BLACK** on the Communication domain



Personal-Social domain or Problem Solving domain

OR

If the child is 'In the BLACK' on 2 or more domains and has any of the following presenting concerns:

- Kids who are not progressing in services as expected or recent increase in symptoms
- Kids who have challenging behaviors with inadequate response to behavioral interventions or medication.
- Kids with secondary medical issues that are not responding to usual treatments (including feeding and nutrition)
- Kids who may be experiencing traumatic events

Adverse Childhood Experiences

Adverse childhood experiences (ACEs) are stressful or traumatic events, including abuse and neglect. They may also include household dysfunction such as witnessing domestic violence or growing up with family members who have substance use disorders. ACEs are strongly related to the development and prevalence of a wide range of health problems throughout a person's lifespan, including those associated with substance misuse.

ACEs include:

- Physical abuse
- Sexual abuse
- Emotional abuse
- Physical neglect
- Emotional neglect
- Mother treated violently
- Substance misuse within household
- Household mental illness
- Parental separation or divorce
- Incarcerated household member

<https://www.samhsa.gov>



Tool #3: Parent Education/Shared Decision Making Tool to Support Parent Understanding and Access of Services

The **one-page Parent Education/Shared Decision Making Sheet** is a compendium to the medical decision tree and is a one-page summary of potential follow-up steps that are meant to support shared decision making and that the parent receives at the end of the visit. These sheets include options for referral, an explanation about the services provided, notes about eligibility, and important contact information. Based on the screening results, providers check the box(es) of the appropriate program or service that the child/family is being referred to. The sheet is specific to services available in the community and may include Early Intervention, Home Visiting Programs, Medical and Therapy Services, and Parenting Supports. This tool can be a helpful resource with information for parents/families to understand next steps, as well as act as a decision support tool for Providers when facilitating conversations during the visit.

Given the tools are provided to the parents, OPIP translated each parent education into Spanish for sites that requested it based on their patient population. Therefore, for each site there may be two versions of the tool.

Tools Developed Through This Project Provided On the Following Pages:

Clatsop County and specific to CMH – Pediatrics

English Page 16

Spanish Page 17

Columbia County and specific to OHSU-Scappoose

English Page 18

Tillamook County – Tillamook County Community Health

English Page 19

Spanish Page 20

Tillamook County –Adventist Women’s and Families

English Page 21

Follow-Up to Screening: How We Can Support Your Child

Why did we have you complete a questionnaire about your child's development?

Our goal is to help young brains and bodies develop and grow to their fullest potential. These support services can help prepare your child for kindergarten and beyond.

National recommendations call for specific tools to be used to assess a child's development, such as the one you completed. This tool helps identify kids who may be at-risk for delays. It is important to identify these delays early, as there are services that can address them.



Based on the results, we are referring your child to the services checked below:

Early Intervention

Who is Early Intervention (EI)?

EI helps babies and toddlers with their development. In your area, Northwest Regional Education Service District (NWRES D) runs the EI program.

EI focuses on helping young children learn skills. EI services enhance language, social and physical development through play-based interventions and parent coaching.

There is no charge (it is free) to families for EI services.

What to expect if your child was referred to EI:

- NWRES D will call you to set up an appointment for their team to assess your child.
- If you miss their call, you should call back to schedule a time for the evaluation. They have a limited time to set up the appointment.
- Their phone number is 503-338-3368.

The results from their assessment will be used to determine whether or not EI can provide services for your child.

Contact Information:

NWRES D Intake Coordinator
503-338-3368 | www.nwresd.org

CaCoon

Who is CaCoon?

CaCoon is a public health nursing program serving families. CaCoon public health nurses work with your family to support your child's health and development. A CaCoon nurse will meet with you in your home, or wherever works best for you and your child.

There is no charge (it is free) to families for CaCoon services.

Contact Information:

Mandy Mattison
Phone: 503-325-8500

<http://www.co.clatsop.or.us/publichealth/page/maternal-child-health-programs>

Supports within CMH

At our practice we are lucky enough to have a Family Transitional Planner who could help your family with things like:

- Additional developmental promotion resources
- Social and emotional supports
- Navigating community resources

Contact Information:

Shirley Butler
Family Transitional Planner
Phone: 503-338-7598

Medical and Therapy Services

Your child's health care provider referred you to the following:

- Speech Language Pathologist: Specializes in speech, voice, and swallowing disorders
- Audiologist: Specializes in hearing and balance concerns
- Developmental-Behavioral Pediatrician: Specializes in the following child development areas: Learning delays, Feeding problems, Behavior concern, Delayed development in speech, motor, or cognitive skills
- Autism Specialist: Specializes in providing a diagnosis and treatment plan for children with symptoms of Autism
- Occupational Therapist: Specialize in performance activities necessary for daily life
- Physical Therapist: Specializes in range of movement and physical coordination
- Other:

Why did you sign a consent form?

As your child's primary care provider, we want to be informed about the care your child receives so that we can provide the best care possible. The consent you signed allows the programs to share information back to us.

Different programs have different consent requirements. You will likely be asked to sign more of these to give permission for different providers to communicate about your child's care.

Any Questions?

At Columbia Memorial Hospital - Pediatrics, we are here to support you and your child. If you have questions about this process please call us!

Phone Number: 503-325-7337

Follow Up in Clinic in: _____ 16

Seguimiento al Chequeo Médico: ¿Cómo podemos ayudar a su hijo?

¿Por qué le pedimos que llene un cuestionario sobre el desarrollo de su hijo?

Nuestra meta es ayudar a desarrollar al cuerpo y el cerebro de los niños para que puedan alcanzar todo su potencial. Estos servicios de ayuda y apoyo pueden ayudarlo a preparar a su hijo para el kinder y los años siguientes.

Las recomendaciones nacionales de la Academia Americana de Padiatría indican que ciertas técnicas sean usadas para asesorar el desarrollo de los niños, así como el cuestionario que usted ha completado. Ésta técnica ayuda a identificar a niños que pudieran estar en riesgo de retraso. Es importante poder identificar temprano estos retrasos, ya que hay servicios disponibles que pueden ayudarlo.



Basado en estos resultados, estamos recomendándole a su hijo/a los siguientes servicios que están indicados abajo.

Early Intervention (E.I.) (Intervención Temprana)

E.I. ayuda a los bebés y niños pequeños en su desarrollo. En su área, Servicios de Educación del Distrito del Noroeste (NWRES D) ejecuta el programa de E.I.

E.I. se enfoca en ayudar a niños pequeños a aprender habilidades. Los servicios de E.I. mejoran el desarrollo del lenguaje, social y físico por medio de intervenciones basadas en juegos y entrenamiento de los padres.

No hay cobros, los servicios de E.I. son gratuitos para las familias.

¿Qué es lo que pudiera esperar si su hijo/a fuese recomendado/a para E.I.?

- NWRES D le llamaría para hacer una cita con su equipo para evaluar a su hijo.
- Si tiene una llamada perdida, debería de devolver la llamada para hacer una cita para la evaluación.
- Su número de teléfono es 503-338-3368

Los resultado de la evaluación se utilizarán para determinar si el E.I. puede ofrecerle servicios a su hijo.

Información de contacto:
Coordinador de Admisión de NWRES D
503-338-3368 | www.nwresd.org

CaCoon

CaCoon es un programa de enfermeros de salud pública que ayudan a las familias. Los enfermeros de salud pública trabajan con su familia para ayudar con la salud y desarrollo de su hijo. Un enfermero de CaCoon le visitará a su casa o donde usted o su hijo prefieran reunirse. No hay cargos, los servicios de CaCoon son gratuitos para las familias.

Información de contacto:

Mandy Mattison
Phone: 503-325-8500

Servicios Médicos y Terapéuticos

El proveedor de salud de su hijo le recomienda los siguientes servicios:

- Patólogo del lenguaje y el habla (Speech Language Pathologist): Especialistas en trastornos del habla, del lenguaje y de la deglución.
- Audiólogo (Audiologist): Especialistas en problemas auditivos y del equilibrio.
- Terapeuta Ocupacional (Occupational Therapist): Especialista en el rendimiento de actividades necesarias para la vida diaria.
- Terapeuta Físico (Physical Therapist): Especialista en rango de movimiento y coordinación física.
- Los pediatras de desarrollo conductual (Developmental-Behavioral Pediatrician): Especialistas en las siguientes áreas del desarrollo del niño: retrasos de aprendizaje, problemas de conducta, retraso en el desarrollo del habla, destrezas motoras o cognitivas.
- Servicios de Salud de Comportamiento: (Child Behavioral Health Services) Especializados en valoraciones de salud mental, consejería individual/familiar/en grupo, entrenamiento de habilidades e intervención de crisis.
- Especialista en autismo (Autism Specialist): Especialista en proveer una diagnosis y plan de tratamiento para niños/as con síntomas de autismo.

¿Por qué firmó un formulario de consentimiento?

Cómo proveedor médico de atención primaria de su hijo, queremos estar informados sobre el cuidado que recibe su hijo/a para poder ofrecerle el mejor cuidado posible. El formulario de consentimiento que usted firmó permite que los programas nos compartan la información.

Diferentes programas tienen diferentes requisitos de consentimiento. Para que los diferentes proveedores puedan comunicarse sobre el cuidado de su hijo, probablemente le pedirán que firme más de un permiso.

¿Tiene alguna pregunta?

En CMH - Pediatrics, estamos aquí para ayudar a usted y a su hijo. Si tiene preguntas sobre éste proceso, ¡por favor llámenos! Número de teléfono: 503-325-7337

Follow-Up to Screening: How We Can Support Your Child

Why did we have you complete a questionnaire about your child's development?

Our goal is to help young brains and bodies develop and grow to their fullest potential. These support services can help prepare your child for kindergarten and beyond.

National recommendations call for specific tools to be used to assess a child's development, such as the one you completed. This tool helps identify kids who may be at-risk for delays. It is important to identify these delays early, as there are services that can address them.



Based on the results, we are referring your child to the services checked below:

Early Intervention

Who is Early Intervention (EI)?

EI helps babies and toddlers with their development. In your area, Northwest Regional Education Service District (NWRESD) runs the Columbia Service Center EI program.

EI focuses on helping young children learn skills. EI services enhance language, social and physical development through play-based interventions and parent coaching.

There is no charge (it is free) to families for EI services.

What to expect if your child was referred to EI:

- NWRESD will call you to set up an appointment for their team to assess your child.
- If you miss their call, you should call back to schedule a time for the evaluation. They have a limited time to set up the appointment.
- Columbia Service Center can schedule EI evaluations on Mondays and Wednesdays at 9 or 1.
- Their phone number is 503-366-4141.

The results from their assessment will be used to determine whether or not EI can provide services for your child.

Contact Information:

NWRESD Intake Coordinator
503-366-4141 | www.nwresd.org

Public Health Home Visiting

What are Home Visiting Nurse Programs?

Public health nursing programs provide support to families. Public health nurses will work with your family to support your child's health and development. A nurse will meet with you in your home, or wherever works best for you and your child.

There is no charge (it is free) to families for Home Visiting services.

What to expect if your child was referred to Home Visiting:

- A nurse will come to your home, at a time that works for you
- Weigh baby or child and screen for normal development
- Screen for healthy eyes, ears, and teeth
- Answer questions and provide resources

Contact Information: Heather Bell

Phone: 503-397-4651
www.tphfcc.org/home-visiting-programs

Medical and Therapy Services

Your child's health care provider referred you to the following:

- Speech Language Pathologist: Specializes in speech, voice, and swallowing disorders
- Audiologist: Specializes in hearing and balance concerns
- Developmental-Behavioral Pediatrician: Specializes in the following child development areas: Learning delays, Feeding problems, Behavior concern, Delayed development in speech, motor, or cognitive skills
- Autism Specialist: Specializes in providing a diagnosis and treatment plan for children with symptoms of Autism
- Occupational Therapist: Specialize in performance activities necessary for daily life
- Physical Therapist: Specializes in range of movement and physical coordination

Why did you sign a consent form?

As your child's primary care provider, we want to be informed about the care your child receives so that we can provide the best care possible. The consent you signed allows the programs to share information back to us.

Different programs have different consent requirements. You will likely be asked to sign more of these to give permission for different providers to communicate about your child's care.

Any Questions?

At OHSU Scappoose, we are here to support you and your child. If you have questions about this process or if you haven't heard from the agency you were referred in two weeks please call us!

Phone Number: 503-418-4222 18

Follow-Up to Screening: How We Can Support Your Child

Why did we have you complete a questionnaire about your child's development?

Our goal is to help young brains and bodies develop and grow to their fullest potential. These support services can help prepare your child for kindergarten and beyond.

National recommendations call for specific tools to be used to assess a child's development, such as the one you completed. This tool helps identify kids who may be at-risk for delays. It is important to identify these delays early, as there are services that can address them.



Based on the results, we are referring your child to the services checked below:

Early Intervention

Who is Early Intervention (EI)?

EI helps babies and toddlers with their development. In your area, Northwest Regional Education Service District (NWRES D) runs the Tillamook Service Center- EI program.

EI focuses on helping young children learn skills. EI services enhance language, social and physical development through play-based interventions and parent coaching.

There is no charge (it is free) to families for EI services.

What to expect if your child was referred to EI:

- NWRES D will call you to set up an appointment for their team to assess your child.
- If you miss their call, you should call back to schedule a time for the evaluation. They have a limited time to set up the appointment.
- Tillamook Service Center can schedule EI evaluations on Wednesdays and Thursdays at 9, 11 or 1:30.
- Their phone number is 503-842-8423

The results from their assessment will be used to determine whether or not EI can provide services for your child.

Contact Information:

NWRES D Intake Coordinator
503-842-8423 | www.nwresd.org

CaCoon/BabiesFirst

Who is CaCoon and Babies First?

CaCoon and Babies First are public health nursing programs serving families. A public health nurse will work with your family to support your child's health and development. A nurse will meet with you in your home, or wherever works best for you and your child.

There is no charge (it is free) to families for CaCoon or Babies First services.

Contact Information:

Cerisa Albrechtsen, 503-842-3941

Colleen Schwindt, 503-842-3931

<http://tillamookchc.org/public-health>

Tillamook Library Storytime

The library offers storytimes for kids of all ages. Reading out loud to your child is a great way to promote language development.

Tuesday: 10:00 am Terrific Twos (24 to 36 months) Come play with bubbles, balls, bells, and parachutes!

Friday: 10:00 am Mother Goose on the Loose (birth - 24 months) Come enjoy rhymes, puppets, songs, musical instruments and more, followed by a play period.

Saturday: 10:00 am Mother Goose on the Loose (birth - 24 months)

Medical and Therapy Services

Your child's health care provider referred you to the following:

Located at Adventist Rehabilitation

- Speech Language Pathologist: Specializes in speech, voice, and swallowing disorders
- Audiologist: Specializes in hearing and balance concerns
- Occupational Therapist: Specialize in performance activities necessary for daily life
- Physical Therapist: Specializes in range of movement and physical coordination
- Behavioral Health : Along with medical care, the Health Center can offer Behavioral Health services to help promote healthy development

Located in Portland:

- Developmental-Behavioral Pediatrician: Specializes in the following child development areas: Learning delays, Feeding problems. Behavior concern, Delayed development in speech, motor, or cognitive skills
- Autism Specialist: Specializes in providing a diagnosis and treatment plan for children with symptoms of Autism

Why did you sign a consent form?

As your child's primary care provider, we want to be informed about the care your child receives so that we can provide the best care possible. The consent you signed allows the programs to share information back to us.

Different programs have different consent requirements. You will likely be asked to sign more of these to give permission for different providers to communicate about your child's care.

Any Questions?

At the Health Center we are here to support you and your child. If you have questions about this process or if you haven't heard from the agency you were referred in two weeks please call us!

Phone Number: 503-842-3900

Seguimiento al Chequeo Médico: ¿Cómo podemos ayudar a su hijo?

¿Por qué le pedimos que llene un cuestionario sobre el desarrollo de su hijo?

Nuestra meta es ayudar a desarrollar al cuerpo y el cerebro de los niños para que puedan alcanzar todo su potencial. Estos servicios de ayuda y apoyo pueden ayudarlo a preparar a su hijo para el kinder y los años siguientes.

Las recomendaciones nacionales de la Academia Americana de Padiatría indican que ciertas técnicas sean usadas para asesorar el desarrollo de los niños, así como el cuestionario que usted ha completado. Ésta técnica ayuda a identificar a niños que pudieran estar en riesgo de retraso. Es importante poder identificar temprano estos retrasos, ya que hay servicios disponibles que pueden ayudarlo.



Basado en estos resultados, estamos recomendándole a su hijo/a los siguientes servicios que están indicados abajo.

Early Intervention (E.I.) (Intervención Temprana)

E.I. ayuda a los bebés y niños pequeños en su desarrollo. En su área, Servicios de Educación del Distrito del Noroeste (NWRESD) ejecuta el programa de E.I.

E.I. se enfoca en ayudar a niños pequeños a aprender habilidades. Los servicios de E.I. mejoran el desarrollo del lenguaje, social y físico por medio de intervenciones basadas en juegos y entrenamiento de los padres.

No hay cobros, los servicios de E.I. son gratuitos para las familias.

¿Qué es lo que pudiera esperar si su hijo/a fuese recomendado/a para E.I.?

- NWRESD le llamaría para hacer una cita con su equipo para evaluar a su hijo.
- Si tiene una llamada perdida, debería de devolver la llamada para hacer una cita para la evaluación.
- El Centro de Servicios de Educación de Tillamook puede hacer citas para evaluaciones de Intervención Temprana los miércoles a las 9am o las 12pm
- Su número de teléfono es 503-842-8432.

Los resultado de la evaluación se utilizarán para determinar si el E.I. puede ofrecerle servicios a su hijo.

Información de contacto:

Coordinador de Admisión de NWRESD
503-842-8432 | www.nwresd.org

CaCoon y Bebés Primero

CaCoon y Bebés Primero son programas de enfermeros de salud pública que ayudan a las familias. Los enfermeros de salud pública trabajan con su familia para ayudar con la salud y desarrollo de su hijo. Un enfermero de CaCoon/Bebés Primero le visitará a su casa o donde usted o su hijo prefieran reunirse. No hay cargos, los servicios de CaCoon/ Bebés Primero son gratuitos para las familias.

Información de contacto:

Cerisa Albrechtsen, 503-842-3941
Colleen Schwindt, 503-842-3931
<http://tillamookchc.org/public-health>

La biblioteca

La biblioteca ofrece cuentos para niños de todas las edades. Leer en voz alta a su hijo es una excelente manera de promover el desarrollo del lenguaje.

Martes: 10:00 a.m. Terrific Twos (Fantástica edad de los 2 años) (de 24 a 36 meses) ¡Ven a jugar con burbujas, pelotas, campanas y paracaídas!

Viernes: 10:00 a.m. Mother Goose on the Loose (Rimas de Mamá Oca) (de nacimiento- 24 meses) Venga a disfrutar de rimas, títeres, canciones, instrumentos musicales y más, seguido de un período de juego.

Sábado: 10:00 a.m. Mother Goose on the Loose (Rimas de Mamá Oca) (de nacimiento - 24 meses)

Servicios Médicos y Terapéuticos

El proveedor de salud de su hijo le recomienda los siguientes servicios:

- Patólogo del lenguaje y el habla (Speech Language Pathologist): Especialistas en trastornos del habla, del lenguaje y de la deglución.
- Audiólogo (Audiologist): Especialistas en problemas auditivos y del equilibrio.
- Terapeuta Ocupacional (Occupational Therapist): Especialista en el rendimiento de actividades necesarias para la vida diaria.
- Terapeuta Físico (Physical Therapist): Especialista en rango de movimiento y coordinación física.
- Los pediatras de desarrollo conductual (Developmental-Behavioral Pediatrician): Especialistas en las siguientes áreas del desarrollo del niño: retrasos de aprendizaje, problemas de alimentación, problemas de conducta, retraso en el desarrollo del habla, destrezas motoras o cognitivas.
- Especialista en autismo (Autism Specialist): Especialista en proveer una diagnosis y plan de tratamiento para niños/as con síntomas de autismo.
- Comportamiento Saludable: Junto con la atención médica, el Centro de Salud de Tillamook puede ofrecer servicios de Salud del Comportamiento para ayudar a promover el desarrollo saludable

¿Por qué firmó un formulario de consentimiento?

Cómo proveedor médico de atención primaria de su hijo, queremos estar informados sobre el cuidado que recibe su hijo/a para poder ofrecerle el mejor cuidado posible. El formulario de consentimiento que usted firmó permite que los programas nos compartan la información.

Diferentes programas tienen diferentes requisitos de consentimiento. Para que los diferentes proveedores puedan comunicarse sobre el cuidado de su hijo, probablemente le pedirán que firme más de un permiso.

¿Tiene alguna pregunta?

En el centro de salud, estamos aquí para ayudar a usted y a su hijo. Si tiene preguntas sobre éste proceso, ¡por favor llámenos! Número de teléfono: 503-842-3900

Follow-Up to Screening: How We Can Support Your Child

Why did we have you complete a questionnaire about your child's development?

Our goal is to help young brains and bodies develop and grow to their fullest potential. These support services can help prepare your child for kindergarten and beyond.

National recommendations call for specific tools to be used to assess a child's development, such as the one you completed. This tool helps identify kids who may be at-risk for delays. It is important to identify these delays early, as there are services that can address them.



Based on the results, we are referring your child to the services checked below:

Early Intervention

Who is Early Intervention (EI)?

EI helps babies and toddlers with their development. In your area, Northwest Regional Education Service District (NWRESD) runs the Tillamook Service Center- EI program.

EI focuses on helping young children learn skills. EI services enhance language, social and physical development through play-based interventions and parent coaching.

There is no charge (it is free) to families for EI services.

What to expect if your child was referred to EI:

- NWRESD will call you to set up an appointment for their team to assess your child.
- If you miss their call, you should call back to schedule a time for the evaluation. They have a limited time to set up the appointment.
- Tillamook Service Center can schedule EI evaluations on Wednesdays at 9 or 12.
- Their phone number is 503-842-8432.

The results from their assessment will be used to determine whether or not EI can provide services for your child.

Contact Information:

NWRESD Intake Coordinator
503-842-8432 | www.nwresd.org

CaCoon/BabiesFirst

Who is CaCoon and Babies First?

CaCoon and Babies First are public health nursing programs serving families. A public health nurse will work with your family to support your child's health and development. A nurse will meet with you in your home, or wherever works best for you and your child.

There is no charge (it is free) to families for CaCoon or Babies First services.

Contact Information:

Cerisa Albrechtsen, 503-842-3941

Colleen Schwindt, 503-842-3931

<http://tillamookchc.org/public-health>

Tillamook Library Storytime

The library offers storytimes for kids of all ages. Reading out loud to your child is a great way to promote language development.

Tuesday: 10:00 am Terrific Twos (24 to 36 months) Come play with bubbles, balls, bells, and parachutes!

Friday: 10:00 am Mother Goose on the Loose (birth - 24 months) Come enjoy rhymes, puppets, songs, musical instruments and more, followed by a play period.

Saturday: 10:00 am Mother Goose on the Loose (birth - 24 months)

Medical and Therapy Services

Your child's health care provider referred you to the following:

- Speech Language Pathologist: Specializes in speech, voice, and swallowing disorders
- Audiologist: Specializes in hearing and balance concerns
- Developmental-Behavioral Pediatrician: Specializes in the following child development areas: Learning delays, Feeding problems, Behavior concern, Delayed development in speech, motor, or cognitive skills
- Autism Specialist: Specializes in providing a diagnosis and treatment plan for children with symptoms of Autism
- Occupational Therapist: Specialize in performance activities necessary for daily life
- Physical Therapist: Specializes in range of movement and physical coordination

Why did you sign a consent form?

As your child's primary care provider, we want to be informed about the care your child receives so that we can provide the best care possible. The consent you signed allows the programs to share information back to us.

Different programs have different consent requirements. You will likely be asked to sign more of these to give permission for different providers to communicate about your child's care.

Any Questions?

At Adventist Women's and Family, we are here to support you and your child. If you have questions about this process please call us!

Phone Number: 503-842-5546



Tool #4: Phone Follow-Up Script for Children Referred to Early Intervention

Some studies show that people make a decision in the first 48 hours on referral. Colleagues focused on follow-up to developmental screening Illinois found that calling parents within that window increased parent access of referrals for their children

Given that across the three counties, nearly 2 in five children EI was unable to engage and get the family in for referral, better supported referrals was a focus of the improvement effort.

OPIP modified the script developed by Illinois for the primary care sites and for the Early Intervention staff in county.

A general and customizable version is provided on the following page. These phone calls can be used to help identify barriers to following through with and evaluation. Below is a sample script that could be used to facilitate the phone call.

PHONE FOLLOW-UP SCRIPT:

Hello- May I speak with (name of patient's primary caregiver). My name is (your name) and I'm Dr. XX's (whatever your position is). Your son / daughter, (Name of child) had an appointment with Dr. XX on (time, date, location) for a well visit.

At your appointment, Dr. XX recommended that your child go to (Insert EI program Name i.e. Early Intervention at Northwest Regional Education Service District). We realize it can be overwhelming to get a lot of information about next steps at your appointment, so I wanted to call and answer any questions that you have may have had come up since then.

So what questions do you have about why Dr. XX wanted (insert child's name) to go to Early Intervention at Northwest Regional Education Service District, or about what will happen next?

Answer questions (frequent questions or concerns highlighted in blue)

- When completing the referral, you were asked to sign the **consent form**. This gives Early Intervention permission to share information about the evaluation back to us. This helps us to provide the best care for (insert child name)
- **Why go to EI/ What does EI do:** At the appointment Northwest Regional Education Service District will be doing a more detailed evaluation of (insert child's name) development.
Then, based on their assessment they will help us understand what we can do to support (insert child's name) and whether your child may benefit from services.

Can you think of any barriers that might come up for you and your family in getting (insert child)'s name to these services?

Are there any other questions that you have or anything else I can do to help you in getting to these appointments?

If **no further questions:** Great. You should be getting a call from the Early Intervention Coordinator, his/her name is (INSERT NAME) to schedule an appointment. If you would like to call to schedule at a time that works for you, the best number is (INSERT PHONE NUMBER)

We are here to support you, so if you have any questions, feel free to contact (insert name) at (phone number).



Tool #5: Summary of Providers and Services Available to Service Children Identified At-Risk for Developmental Delay

On the following pages is a sample table that could be used to help facilitate and understand coverage and capacity of providers contracted with the CCO that could serve as a pathway to follow up to developmental screening.

Important components to consider in coverage and capacity include:

- Ability to Serve Children 0-5
- Availability of service in other languages based on county level needs
- Benefit Coverage and requirements for services to be approved (if any)

OPIP asked CPCCO to complete this tool in the Fall 2018. We believe there are a number of updates needed to this tool and it still needs clarity added on which services are available in Spanish. Secondly, we do not feel this is an accurate summary of services available for children in Columbia County who may access services in the Portland metropolitan region.

This may be a valuable area to focus future efforts and to ensure ongoing maintenance as primary care noted it as a valuable.

CPCCO Coverage of Medical and Therapy Services for Children with Developmental, Behavioral or Social Delays

Type of Medical or Therapy Service Addressing Developmental Delays	Covered (Y/N)	Benefit Coverage, Any Requirements for Service to be Approved ¹	Providers in CPCCO Contract That are Able to Provide Services	Serve Children aged 1 month - 3 years old?
Medical Services				
Developmental/ Behavioral Pediatrician	Y	PCP provider should refer child to CDRC. Authorization process for specialists should be followed. CDRC provides specialty services such as speech therapy, PT, OT, and hearing therapy and other specialist services.	OHSU – CDRC	Y
			Providence Children’s Development Institute	Y
Autism Evaluation OHSU Autism Clinic	Y	Authorization process for specialists and or mental health should be followed. (this may fall under the mental health benefit, depends on codes.)	OHSU – CDRC	Y
Occupational Therapy Services				
Occupational Therapy Services	Y	Services authorized on a calendar year For OHP 1) No Authorization required for evaluations for ATL diagnosis which pairs with CPT code 2) Authorization required for therapy visits. *CareOregon will allow an evaluation and five visits (combined) for members with BTL diagnosis annually with authorization.	Tillamook Regional Medical Center- Adventist Rehabilitation Services	
			Columbia Memorial Hospital Rehabilitation Services	
			OHSU – CDRC	Y
			Providence Children’s Development Institute	Y

Type of Medical or Therapy Service Addressing Developmental Delays	Covered (Y/N)	Benefit Coverage, Any Requirements for Service to be Approved ²	Providers in CPCCO Contract That are Able to Provide Services	Serve Children aged 1 month - 3 years old?
Physical Therapy Services				
Physical Therapy Services	Y	Services authorized on a calendar year For OHP 1) No Authorization required for evaluations for ATL diagnosis which pairs with CPT code 2) Authorization required for therapy visits. *CareOregon will allow an evaluation and five visits (combined) for members with BTL diagnosis annually with authorization.	Tillamook Regional Medical Center- Adventist Columbia Memorial Hospital Rehabilitation Services OHSU – CDRC Providence Children’s Development Institute	Y Y
Speech Therapy Services				
Speech Therapy	Y	Services authorized on a calendar year For OHP 1) No Authorization required for evaluations for ATL diagnosis which pairs with CPT code 2) Authorization required for therapy visits. *CareOregon will allow an evaluation and five visits (combined) for members with BTL diagnosis annually with authorization.	Tillamook Regional Medical Center- Adventist Columbia Memorial Hospital Rehabilitation Services OHSU – CDRC Providence Children’s Development Institute	Y Y

Type of Medical or Therapy Service Addressing Developmental Delays	Covered (Y/N)	Benefit Coverage, Any Requirements for Service to be Approved ³	Providers in CPCCO Contract That are Able to Provide Services	Serve Children aged 1 month - 3 years old?
Behavioral Health Services				
Behavioral Health Services provided by staff within Primary Care Office for Children without Medical Diagnosis. Some Specifics: Health and Behv. 96150-96154 Prev. Counseling 99401-99404, 99411-99412	Y	CPT should be paired with physical health condition	Tillamook County Community Health Center	Y
			Columbia Memorial Hospital – Pediatrics	Y
			OHSU – Scappoose	Y
			All credentialed providers	
Developmental testing (includes assessment of motor, language, social, adaptive and/or cognitive functioning by standardized developmental instruments) with interpretation and report 96111				
Behavioral Health Screen: Use for ASQ SE 96127			All credentialed providers	
Psychiatric Diag Eval 90791		Authorization required for all services through GOBHI.	Columbia County Mental Health (& entities they may sub contract)	
			Clatsop Behavioral Health (& entities they may sub contract)	
			Tillamook Family Counseling (& entities they may sub contract)	
Psychotherapy 90832/90834/90837, 90846-47, 90839-40, 90849/90853		Authorization required for all services through GOBHI.	Columbia County Mental Health (& entities they may sub contract)	
			Clatsop Behavioral Health (& entities they may sub contract)	
			Tillamook Family Counseling (& entities they may sub contract)	

Type of Medical or Therapy Service Addressing Developmental Delays	Covered (Y/N)	Benefit Coverage, Any Requirements for Service to be Approved ⁴	Providers in CPCCO Contract That are Able to Provide Services	Serve Children aged 1 month - 3 years old?
Pediatric Psychological Testing Services		Authorization required for all services through GOBHI depending on the procedure code, or it may be the physical health PA requirements.	Columbia County Mental Health (& entities they may sub contract)	
			Clatsop Behavioral Health (& entities they may sub contract)	
			Tillamook Family Counseling (& entities they may sub contract)	
Social Skills Groups		Authorization required for all services through GOBHI depending on the procedure code, or it may be the physical health PA requirements.	Columbia County Mental Health (& entities they may sub contract)	
			Clatsop Behavioral Health (& entities they may sub contract)	
			Tillamook Family Counseling (& entities they may sub contract)	
Applied Behavior Analysis		Authorization required for all services through GOBHI.	Columbia County Mental Health (& entities they may sub contract)	
			Clatsop Behavioral Health (& entities they may sub contract)	
			Tillamook Family Counseling (& entities they may sub contract)	
Parent and Child Interaction Therapy (Kids older than two)		Authorization required for all services through GOBHI.	Columbia County Mental Health	
Child and Parent Psychotherapy (Kids 0-3)		Authorization required for all services through GOBHI.	Clatsop Behavioral Health	
			Columbia County Mental Health	
			Tillamook Family Counseling Center	
			Shasta Counseling	
Infant Massage	Y/N	**Massage is not generally considered a covered benefit ** PT and OT can provide if part of treatment plan. Authorization required.	Tillamook Regional Medical Center- Adventist	
			Columbia Memorial Hospital Rehabilitation Services	
Other Potential Services – Assume Not in CPCCO Contract				
Social Work Services				