



OPIP Tools for Primary Care Practices to Support Enhanced Follow-Up to Developmental Screening

This toolkit provide copies of the specific tools that OPIP developed and customized for the four pilot primary care practices. These tools were modified and adapted based on learnings from implementation and are specific to the set of services available at the time of the Early Learning Hub of Central Oregon and Central Oregon Health Council funded project, which ended in **May 2021**. Given variations in available services by county and by primary care site, the specific customized versions of the tools are provided.

Table of Contents	Page Number
Tool #1: County Level Asset Maps – Services Available in Each Community to Provide Follow-up to Developmental Screening (Summary as of Spring 2021)	1
Summary Tri-County Asset Map Across Deschutes, Crook and Jefferson Counties	2
Tool #2: Follow-Up to Developmental Screening Medical Decision Tree	4
Central Oregon Pediatric Associates (COPA) Medical Decision Tree	5
Mosaic Medical Group – East Bend Medical Decision Tree	7
Madras Medical Group Medical Decision Tree	9
St. Charles Prineville Medical Decision Tree	11
Tool #3: Parent Education/Shared Decision Making Tool to Support Parent Understanding of Services	13
Central Oregon Pediatric Associates (COPA) Medical Decision Tree	14
Mosaic Medical Group – East Bend Medical Decision Tree	15
Madras Medical Group Medical Decision Tree	17
St. Charles Prineville Medical Decision Tree	19
Tool #4: Sample 36 Hour Phone Follow-Up Script	20



Tool #1: County Asset Maps

The asset maps were developed by OPIP after conducting stakeholder interviews with over 80 people in the communities to understand which services exist, the specific children that they serve, eligibility criterion they may need to use and other information about capacity

These asset maps are specific to and accurate to the time at which OPIP conducted the interviews. These will need to be updated periodically as service available and service capacity will change.

The Asset Maps are meant to illustrate pathways and secondary pathways from screening to services in a way that makes the information easy to follow and digest at a community level.

The Asset Map has three key parts:

Part 1: Entities conducting developmental screening and identifying children at-risk for developmental, behavioral and social delays

Part 2: Follow-up pathways for children identified at-risk for developmental, behavioral and/or social delays on the developmental screening tool

- Part 2a:** Developmental supports provided by entity that screened that addresses identified delays
- Part 2b:** Agencies to which the screening entity can refer at-risk children for an Evaluation or Assessment

Part 3: Additional family supports that address child development and promotion

Tools Developed Through This Project Provided On the Following Pages:

Central Oregon Tri-County Asset Map	2-3
-------------------------------------	-----

PATHWAYS FOR DEVELOPMENTAL SCREENING OF CHILDREN 0-3 & REFERRAL FOR CHILDREN IDENTIFIED AT-RISK IN CENTRAL OREGON

KEY STEPS

**Part 1:
Children 0-3
Identified At-Risk
via Developmental
Screening**

**Part 2a: Within
Primary Care Pilots
Developmental
Supports to Address
Delays Identified By
Entity Who Screened**

**Part 2b:
Referral to Agency for
an Evaluation or
Assessment for
Potential Services
(See 2nd Page for
Location of Services)**

**Part 3:
Additional Family
Supports that Address
Child Development
and Promotion**

VERSION 11/11/20

Primary Practices Conducting Screening to Fidelity (Based on PacificSource Claims)

1. Central Oregon Pediatric Associates (COPA) - Pilot Site
2. Mosaic- Pilot Site
3. Madras Medical Group- Pilot Site
4. St. Charles Prineville-Pilot Site

There appear to be 3 additional clinics that are screening to fidelity based on PacificSource Claims

Primary Practices Who Appear Not to be Screening to Recommendation (Based on PacificSource Claims) :

There appear to be 5 Clinics that are NOT screening to fidelity based on PacificSource Claims

Community-Based Providers Screening Children 0-3:

1. Home Visiting Programs serving young children (Healthy Families, Nurse Family Partnership, BabiesFirst!, CaCoon)
2. Early Head Start
3. Select Childcare Providers

Other:

Healthy Beginnings

LEGEND

D = Deschutes, J=Jefferson
C=Crook County, WS=Conf. Tribes of Warm Springs

┌ Referral to evaluation,
└ not necessarily services

*Located outside the community

COLOR CODING BY SERVICE TYPE WITHIN Part 2A and 2B

Within Pilot Primary Care Sites :

Developmental Promotion

- ASQ Learning Activities
- U of O Online ASQ
- CDC Act Early Materials
- Maryland TREE

Internal Behavioral Health

COPA - 3 LCSW
Mosaic Medical - 2 LCSW/LMFT who provide care to 0-3
St. Charles Prineville

Co-Located Behavioral Health

- Madras Medical Group - 1 LCSW

Developmental Evaluation

1. PEDAL
2. OHSU-CDRC*
3. Providence CDI*

OT/PT/Speech

1. St. Charles Rehabilitation
2. Redmond Speech & Lang.
3. Treehouse Therapies
4. Bend Speech Express
5. Bend Speech/Language
6. Sonos Neurotherapies
7. Skidmore Speech/Lang.
8. Blossom Therapeutics
9. Connections Speech and Lang.

EI/ECSE (all)

High Desert ESD

Family Support Services

(CaCoon and Babies First!)

External Behavioral Health Service Providers

Amy Bordelon, BestCare, Brightways Counseling Group, Blossom Therapeutic Collective: Saul Behavioral LLC, Cherie Skillings, Deschutes County Mental Health, Forever Family Therapy, IHS Warm Springs, Life Source Therapy, Now and Zen Parenting, Prineville Counseling Center, Rimrock Trails, Starfish Counseling, The Child Center, Treehouse Therapies, Youth Villages

(For more information see compendium Behavioral Health Assets in Central Oregon)

The Child Center
Bend, La Pine (D)

Family Resource Center Parenting Hub
Bend (D), Madras (J), Prineville (C)

Family Support Network
Bend (D)

MountainStar Relief Nursery
Bend, La Pine (D), Madras (J),

Childcare Resources/Inclusive Partners/ Find Child Care Oregon
(D, J, C)

Healthy Beginnings
(new parent support models, potential to do ASQ-SE and other follow-up screens)
Madras (J), La Pine, Bend, Redmond (D), Prineville (C)

Library Story Hours & Parent Groups
Bend, Redmond, Sunriver, La Pine, Sisters (D); Madras (J), Prineville (C)

Specific to Children Who Meet Eligibility Criteria:

Head Start
Madras (J), Bend, Redmond (D), Prineville (C)

Early Head Start
Madras (J), Bend, Redmond (D)

Youth Villages Intercept
(specific to DHS involved children)
(D, J, C home visits)

Center for Autism & Related Disorders (CARD)
Bend (D)

Could be a support for families already enrolled (prenatal enrollment required)

Healthy Families Oregon
Bend (D)

Nurse Family Partnership
Bend (D)

Perinatal Care Continuum
(D, J, C)

Early Intervention

Family Support Services: CaCoon/Babies First!

Medical & Therapy Services:

- Developmental Evaluation
- Private OT/PT & Speech Therapy

Behavioral Health Supports:

- Internal Behavioral Health Staff located within 3 primary care pilot sites
- External Behavioral Health Services

Devel. Evaluation	OT/PT/Speech	EI	Family Support Services (CaCoon, Babies First!)	<i>Behavioral Health</i>
-------------------	--------------	----	---	--------------------------

Across Region				<i>Amy Bordelon, Now and Zen, Youth Villages</i>	
Deschutes	X	St. Charles Rehab, Redmond Speech & Lang., Treehouse Therapies, Bend Speech Expresss, Bend Speech/Lang, Sonos Neurotherapies, Skidmore Speech/Lang, Blossom Therapeutics, Connections Speech and Lang	X	X	<i>Deschutes County Mental Health, Brightways Counseling, Cherie Skillings, Forever Family Therapy, Life Source Therapy, Starfish Counseling, The Child Center, Treehouse Therapies, Rimrock</i>
Jefferson			X	X	<i>Jefferson County BestCare, & Brightways Counseling</i>
Crook			X	X	<i>Rimrock Trails, Crook County BestCare, Prineville Counseling Center</i>
Conf. Tribes of Warm Springs			X		
Outside Community	<ul style="list-style-type: none"> ○ OHSU CDRC □ Providence CDI 				



Tool #2: Follow-Up to Developmental Screening Medical Decision Tree

The **Follow-Up to Developmental Screening Medical Decision Tree** is meant to provide the primary care provider with a summary of factors to consider related to the child’s developmental delay and other risk factors and then to outline the best match of community-based services. OPIP conducted a robust training that provided a detailed overview and instructions on how to interpret and use the medical decision tree.

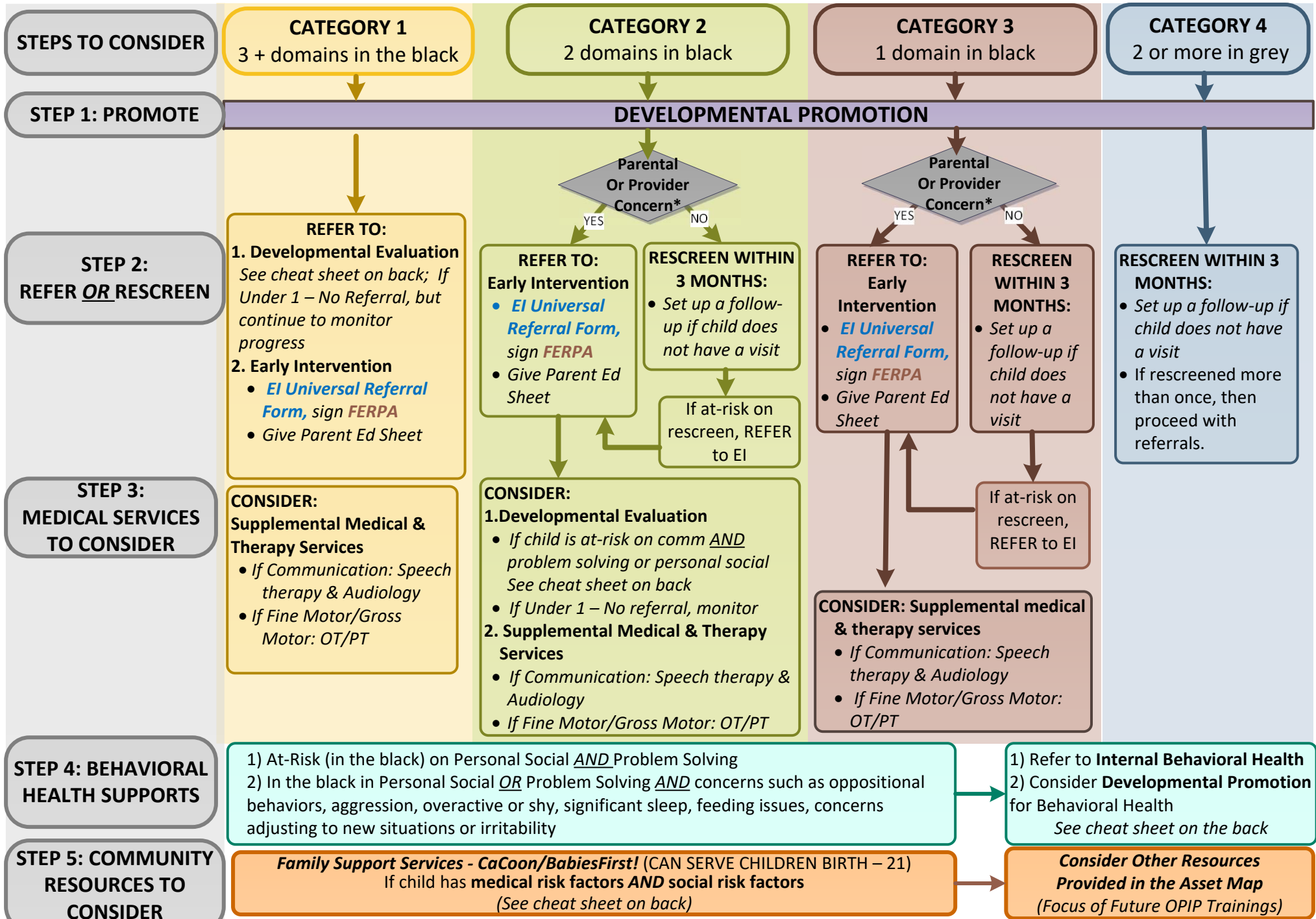
This tool is a conceptual model that may be adapted and used within other communities. It should not and is not intended to be used as a replacement of professional medical advice. Rather, it is meant to help support the primary care provider in thinking about common factors and decision points when considering referrals and in being customized to the community it is meant to provide “dot connection” of local resources that would be valuable.

The decision tree is a two page document that was printed Front-to-Back for the primary care practices:

- The front page of the decision tree provides overall guidance and directions about the best match follow-up recommended.
- The back page provides more targeted and detailed information about specific referrals pathways.

Tools Developed Through This Project Provided On the Following Pages:

Central Oregon Pediatric Associates (COPA) Medical Decision Tree	5-6
Mosaic Medical Group – East Bend Medical Decision Tree	7-8
Madras Medical Group Medical Decision Tree	9-10
St. Charles Prineville Medical Decision Tree	11-12



* One example of when a provider should be concerned is if a child is well-below the cut-off in the domain(s).

DEVELOPMENTAL EVALUATION: CHEAT SHEET

Child the **BLACK** on the **Communication + Personal-Social OR Problem Solving**

OR

If the child is 'In the **BLACK**' on 2 or more domains and has any of the following :

- Not progressing in services as expected or recent increase in symptoms
- Challenging behaviors with inadequate response to behavioral interventions or medication.
- Secondary medical issues that are not responding to usual treatments (including feeding)

REFER TO DEVELOPMENTAL EVALUATION

BEHAVIORAL HEALTH SUPPORTS: CHEAT SHEET

If child is "in black"
Personal Social & Problem Solving

OR

If child is "in black" on
Personal Social OR Problem Solving

+

Concerns such as oppositional, aggressive, overactive or shy/
anxious behaviors, significant sleep, feeding, self-soothing,
adjusting to new situations, or irritability concerns

OR

Exposure to Adverse Childhood Experiences (ACES)
in Family Environment

<https://acestoohigh.com/got-your-ace-score/>

1) REFER To Internal Behavioral Health

- Additional assessments of child's development, parental factors
- Brief parent/child therapies

2) Consider Developmental Promotion specific to Behavioral Health

If additional supports are needed:

- Engage family in behavioral health referral

Referral to Specialty Behavioral Health Services
(see compendium on Behavioral Health Assets)

FAMILY SUPPORT SERVICES – CACOON/BABIES FIRST!: CHEAT SHEET

Deschutes: <https://www.deschutes.org/health/page/nurse-family-support-services>

Crook: <https://co.crook.or.us/Departments/HealthDepartment/PublicHealthServices/ParentChildHealth/HomeVisitingprograms/tabid/2205/Default.aspx>

Jefferson: <https://www.jeffco.net/publichealth/page/family-support-services>

Medical Risk Factors

+

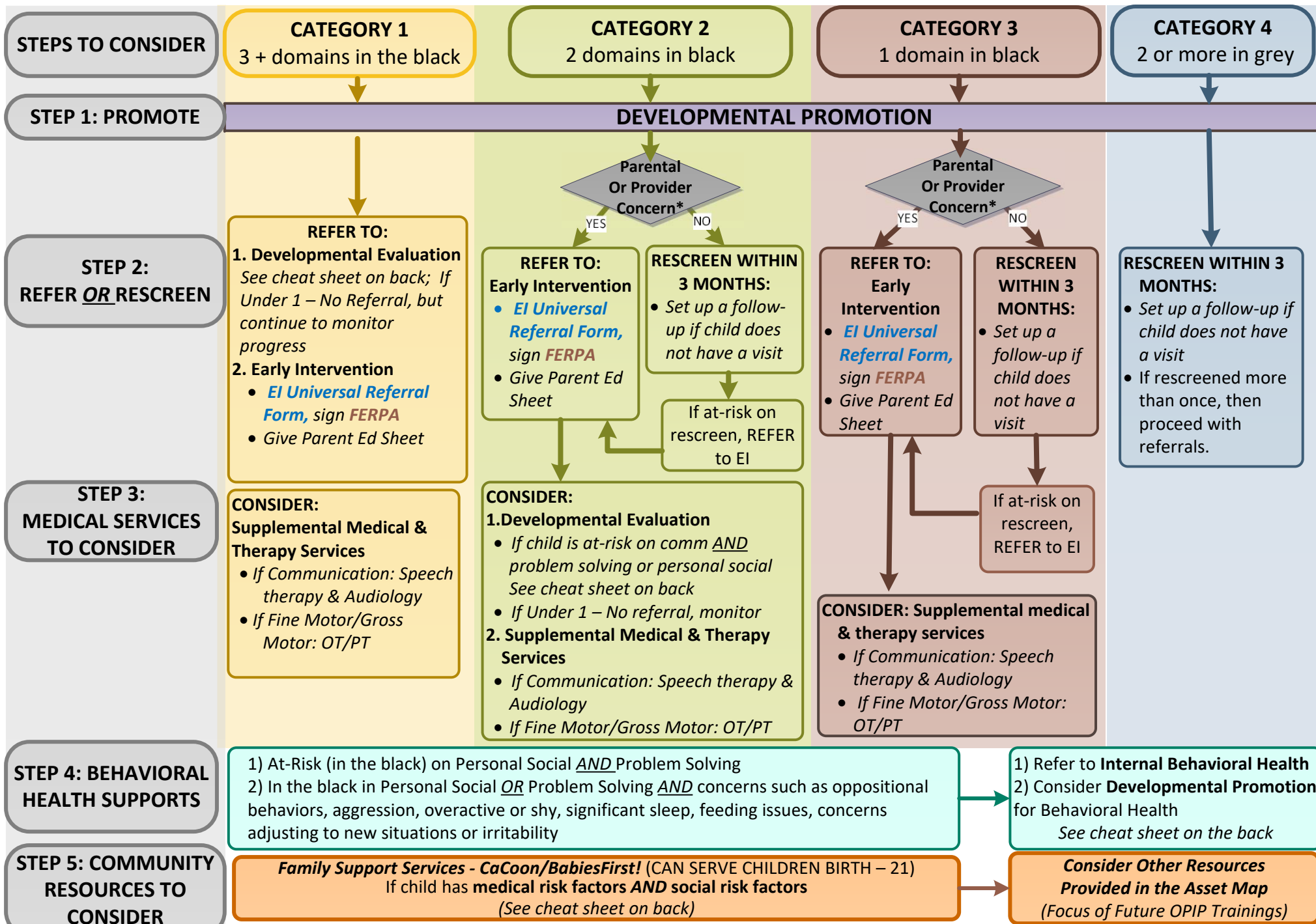
Social and Family Factors

- DHS Involvement
- Low Income – OHP Eligible, Receives TANF/SSI/SNAP
- Feels Depressed or Overwhelmed
- Isolation/Lack of Support
- Parent has Disability
- Domestic Violence (present or history of)
- Incarceration/Probation
- Alcohol/Illegal Drug Use
- Incarceration/Probation
- Tobacco/Marijuana Use
- Support with Parenting/Lack of Parenting Skills
- Homeless

+

Engage Family on Value of Family Support Services

Refer for Family Support Services (CaCoon and BabiesFirst!)



* One example of when a provider should be concerned is if a child is well-below the cut-off in the domain(s).

DEVELOPMENTAL EVALUATION: CHEAT SHEET

Child the **BLACK** on the **Communication +Personal-Social OR Problem Solving**

OR

If the child is 'In the **BLACK**' on 2 or more domains and has any of the following :

- Not progressing in services as expected or recent increase in symptoms
- Challenging behaviors with inadequate response to behavioral interventions or medication.
- Secondary medical issues that are not responding to usual treatments (including feeding)

REFER TO DEVELOPMENTAL EVALUATION

BEHAVIORAL HEALTH SUPPORTS: CHEAT SHEET

If child is "in black"
Personal Social & Problem Solving

OR

If child is "in black" on
Personal Social OR Problem Solving

+

Concerns such as oppositional, aggressive, overactive or shy/
anxious behaviors, significant sleep, feeding, self-soothing,
adjusting to new situations, or irritability concerns

OR

Exposure to Adverse Childhood Experiences (ACES)
in Family Environment

<https://acestoohigh.com/got-your-ace-score/>

1) REFER To Internal Behavioral Health

- Additional assessments of child's development, parental factors
- Brief parent/child therapies

2) Consider Developmental Promotion specific to Behavioral Health

If additional supports are needed:

- Engage family in behavioral health referral

Referral to Specialty Behavioral Health Services
(see compendium on Behavioral Health Assets)

FAMILY SUPPORT SERVICES – CACOON/BABIES FIRST!: CHEAT SHEET

Deschutes: <https://www.deschutes.org/health/page/nurse-family-support-services>

Crook: <https://co.crook.or.us/Departments/HealthDepartment/PublicHealthServices/ParentChildHealth/HomeVisitingprograms/tabid/2205/Default.aspx>

Jefferson: <https://www.jeffco.net/publichealth/page/family-support-services>

Medical Risk Factors

+

Social and Family Factors

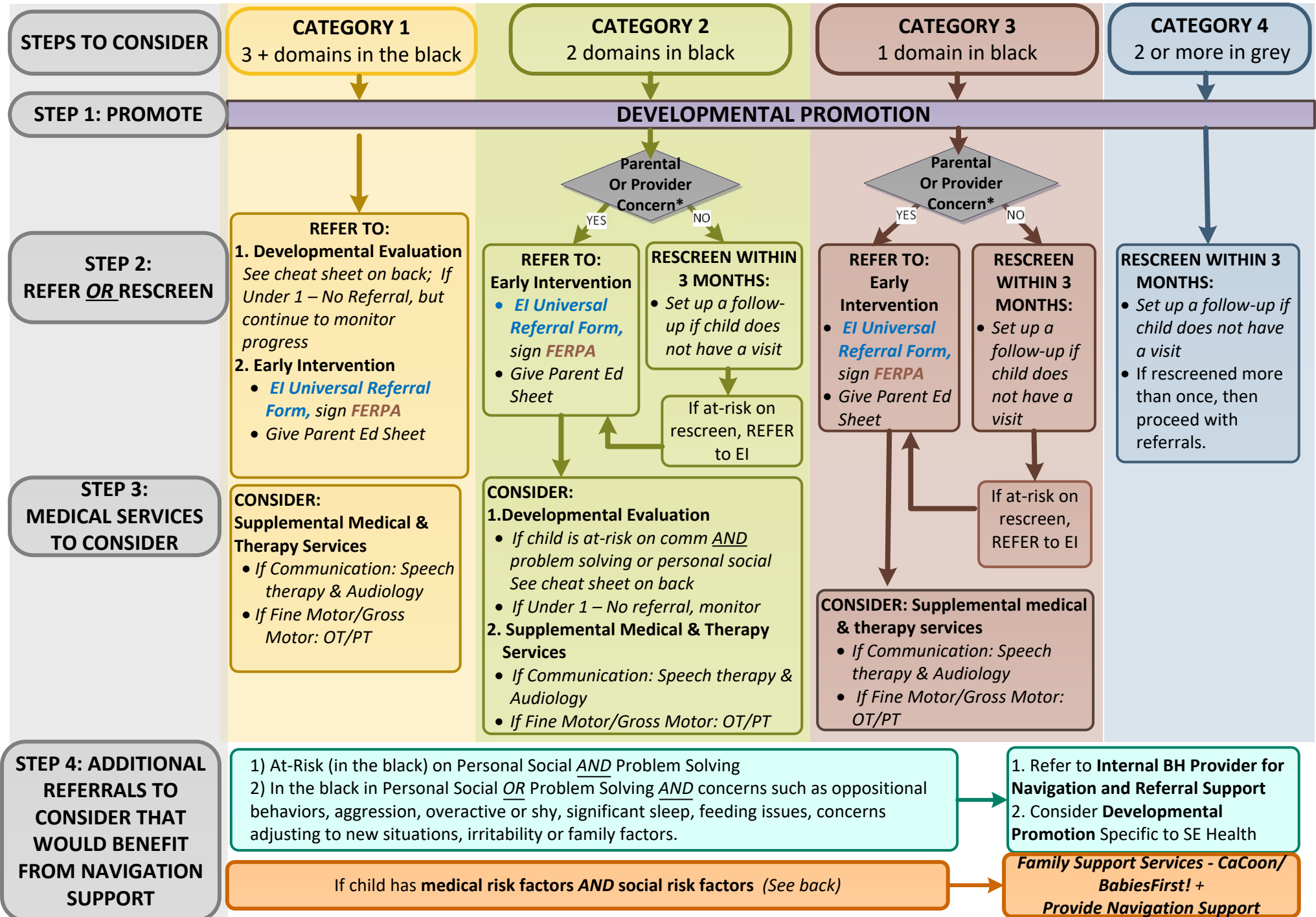
- DHS Involvement
- Low Income – OHP Eligible, Receives TANF/SSI/SNAP
- Feels Depressed or Overwhelmed
- Isolation/Lack of Support
- Parent has Disability
- Domestic Violence (present or history of)
- Incarceration/Probation
- Alcohol/Illegal Drug Use
- Incarceration/Probation
- Tobacco/Marijuana Use
- Support with Parenting/Lack of Parenting Skills
- Homeless

+

Engage Family on Value of Family Support Services

Refer for Family Support Services (CaCoon and BabiesFirst!)

MADRAS MEDICAL GROUP: FOLLOW-UP TO ASQ SCREENINGS IN FIRST THREE YEARS: MEDICAL DECISION TREE



* One example of when a provider should be concerned is if a child is well-below the cut-off in the domain(s).

DEVELOPMENTAL EVALUATION: CHEAT SHEET

Child the **BLACK** on the **Communication + Personal-Social OR Problem Solving**

OR

If the child is 'In the **BLACK**' on 2 or more domains and has any of the following :

- Not progressing in services as expected or recent increase in symptoms
- Challenging behaviors with inadequate response to behavioral interventions or medication.
- Secondary medical issues that are not responding to usual treatments (including feeding)

REFER TO DEVELOPMENTAL EVALUATION

BEHAVIORAL HEALTH SUPPORTS: CHEAT SHEET

If child is "in black"
Personal Social & Problem Solving

OR

If child is "in black" on
Personal Social OR Problem Solving

+

Concerns such as oppositional, aggressive, overactive or shy/ anxious behaviors, significant sleep, feeding, self-soothing, adjusting to new situations, or irritability concerns

OR

Exposure to Adverse Childhood Experiences (ACES) in Family Environment, Maternal Depression or Parental Frustration
<https://acestoohigh.com/got-your-ace-score/>

1) REFER To Internal Behavioral Health

- Navigation and referral support to external specialty behavioral health services where additional assessments can be done
- 2) Consider Developmental Promotion specific to Behavioral Health**

Referral to Specialty Behavioral Health Services
(see compendium on Behavioral Health Assets)

FAMILY SUPPORT SERVICES – CACOON/BABIES FIRST!: CHEAT SHEET

Deschutes: <https://www.deschutes.org/health/page/nurse-family-support-services>

Crook: <https://co.crook.or.us/Departments/HealthDepartment/PublicHealthServices/ParentChildHealth/HomeVisitingprograms/tabid/2205/Default.aspx>

Jefferson: <https://www.jeffco.net/publichealth/page/family-support-services>

Medical Risk Factors

+

Social and Family Factors

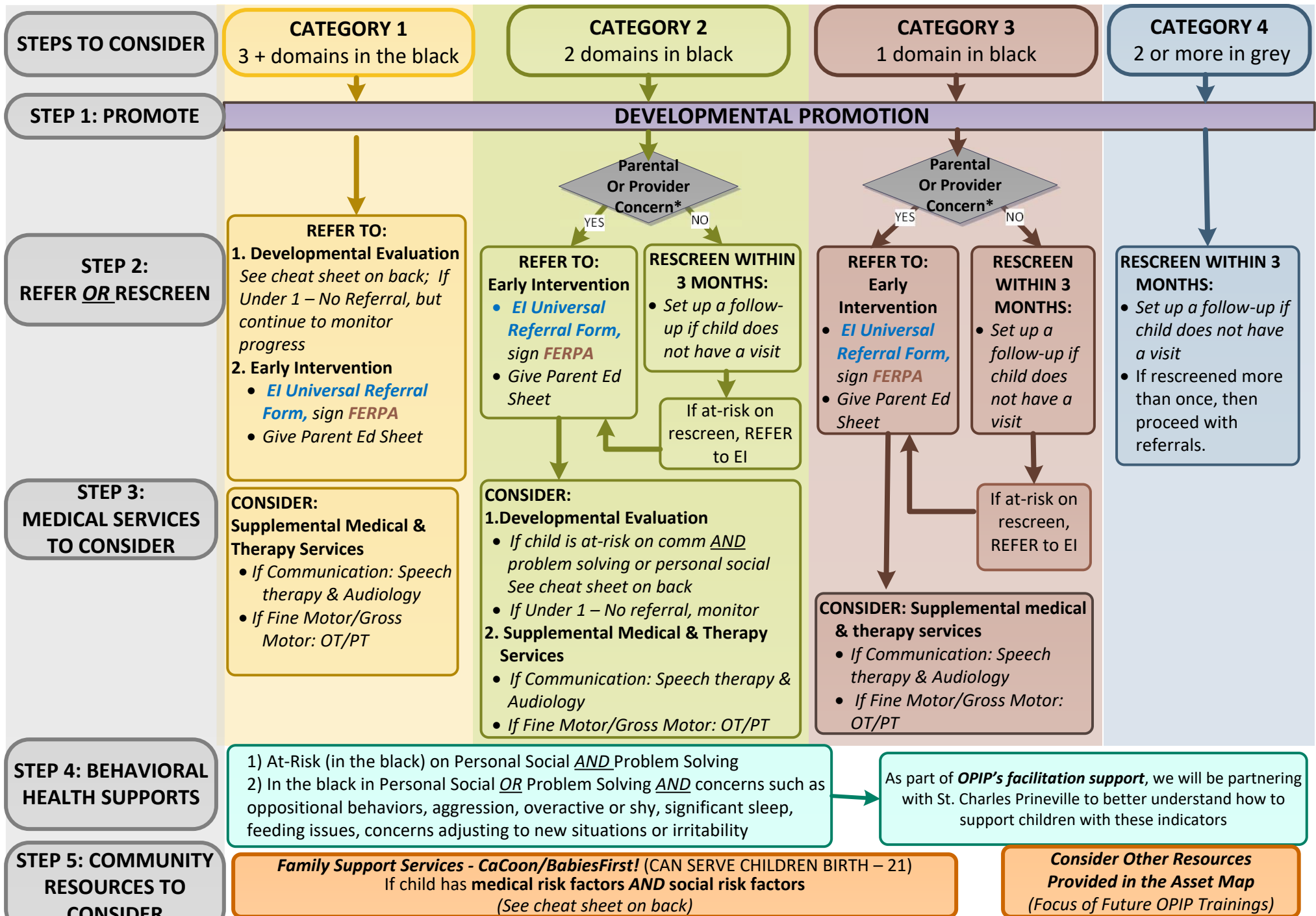
- DHS Involvement
- Low Income – OHP Eligible, Receives TANF/SSI/SNAP
- Feels Depressed or Overwhelmed
- Isolation/Lack of Support
- Parent has Disability
- Domestic Violence (present or history of)
- Incarceration/Probation
- Alcohol/Illegal Drug Use
- Incarceration/Probation
- Tobacco/Marijuana Use
- Support with Parenting/Lack of Parenting Skills
- Homeless

+

Engage Family on Value of Family Support Services

Refer for Family Support Services (CaCoon and BabiesFirst!)

ST CHARLES PRINEVILLE: FOLLOW-UP TO ASQ SCREENINGS IN FIRST THREE YEARS: MEDICAL DECISION TREE



* One example of when a provider should be concerned is if a child is well-below the cut-off in the domain(s).

DEVELOPMENTAL EVALUATION: CHEAT SHEET

Child the **BLACK** on the **Communication + Personal-Social** OR **Problem Solving**

OR

If the child is 'In the BLACK' on 2 or more domains and has any of the following :

- Not progressing in services as expected or recent increase in symptoms
- Challenging behaviors with inadequate response to behavioral interventions or medication.
- Secondary medical issues that are not responding to usual treatments (including feeding)

REFER TO DEVELOPMENTAL EVALUATION

FAMILY SUPPORT SERVICES – CACOON/BABIES FIRST! (CAN SERVE BIRTH – 21)

Deschutes: <https://www.deschutes.org/health/page/nurse-family-support-services>

Crook: <https://co.crook.or.us/Departments/HealthDepartment/PublicHealthServices/ParentChildHealth/HomeVisitingprograms/tabid/2205/Default.aspx>

Jefferson: <https://www.jeffco.net/publichealth/page/family-support-services>

Medical Risk Factors

+

Social and Family Factors

- DHS Involvement
- Low Income – OHP Eligible, Receives TANF/SSI/SNAP
- Feels Depressed or Overwhelmed
- Isolation/Lack of Support
- Parent has Disability
- Domestic Violence (present or history of)
- Incarceration/Probation
- Alcohol/Illegal Drug Use
- Incarceration/Probation
- Tobacco/Marijuana Use
- Support with Parenting/Lack of Parenting Skills
- Homeless

+

Engage Family on Value of Family Support Services

Refer for Family Support Services (CaCoon and BabiesFirst!)



Tool #3: Parent Education/Shared Decision Making Tool to Support Parent Understanding and Access of Services

The [one-page Parent Education/Shared Decision Making Sheet](#) is a compendium to the medical decision tree and is a one-page summary of potential follow-up steps that are meant to support shared decision making and that the parent receives at the end of the visit. These sheets include options for referral, an explanation about the services provided, notes about eligibility, and important contact information. Based on the screening results, providers check the box(es) of the appropriate program or service that the child/family is being referred to. The sheet is specific to services available in the community and may include Early Intervention, Home Visiting Programs, Medical and Therapy Services, and Parenting Supports. This tool can be a helpful resource with information for parents/families to understand next steps, as well as act as a decision support tool for Providers when facilitating conversations during the visit.

Given the tools are provided to the parents, OPIP translated each parent education into Spanish as requested.

Tools Developed Through This Project Provided On the Following Pages:

Central Oregon Pediatric Associates (COPA) Medical Decision Tree	14
Mosaic Medical Group – East Bend Medical Decision Tree	15-16
Madras Medical Group Medical Decision Tree	17-18
St. Charles Prineville Medical Decision Tree	19

Follow-Up to Screening: How We Can Support Your Child

Why did we have you complete a questionnaire about your child's development?

Our goal is to help young brains and bodies develop and grow to their fullest potential. These support services can help prepare your child for kindergarten and beyond.

National recommendations call for specific tools to be used to assess a child's development, such as the one you completed. This tool helps identify kids who may be at-risk for delays. It is important to identify these delays early, as there are services that can address them.



Based on the results, we are referring your child to the services checked below:

Early Intervention (EI)

EI helps babies and toddlers with their development. In your area, High Desert Education Service District (HDES D) runs the EI program.

EI focuses on helping young children learn skills. EI services enhance language, social and physical development through play based interventions and parent coaching.

There is no charge (it is free) to families for EI services.

What to expect if your child was referred to EI:

- HDES D will call you to set up an appointment for their team to assess your child.
- If you miss their call, you should call back to schedule a time for the evaluation. They have a limited time to set up the appointment.
- Your county's Service Center will schedule your EI evaluation:
 - **Deschutes and Crook Service Centers schedule evaluations** Monday-Friday.
 - **Jefferson schedules evaluations** on Tuesday, Wednesday and Thursdays at 9, 11 or 1

The results from their assessment will be used to determine whether or not EI can provide services for your child.

Contact Information:

HDES D Intake Coordinator
Deschutes/Crook: 541-312-1947
Jefferson: 541-693-5740
www.hdesd.org

Family Support Services

Family Support Services, through programs like CaCoon and Babies First!, use public health nurses to work with your family to support your child's health and development. A nurse will meet with you in your home, or wherever works best for you and your child.

There is no charge (it is free) to families for these services.

What to expect if your child is referred to Family Support Services:

A nurse will come to you, at a time and place that works and provide services such as:

- Weigh baby or child and screen for normal development
- Provide information and connection to community based resources
- Make sure your child's health team works well together. The team is made up of your family and the professionals involved.

Contact Information:

Deschutes: 541-322-7448
Jefferson: 541-475-4456
Crook: 541-447-5165

<https://www.ohsu.edu/xd/outreach/occyshn/programs-projects/cacoon.cfm>

Medical & Therapy Services

- **Speech Language Pathologist:** Specializes in speech, voice, and swallowing disorders
- **Audiologist:** Specializes in hearing and balance concerns
- **Occupational Therapist:** Specialize in performance activities necessary for daily life
- **Physical Therapist:** Specializes in range of movement and physical coordination
- **Developmental-Behavioral Pediatrician:** Specializes in the following child development areas: Learning delays, feeding problems, behavior concern, delayed development in speech, motor, or cognitive skills
- **Pediatric Psychologist:** Specializes in neuropsychological assessment, which are an in-depth assessment of skills and abilities in areas as attention, problem solving, language, behaviors and self-regulation.
- **Autism Specialist:** Specializes in providing a diagnosis and treatment plan for children with symptoms of Autism

Within COPA:

- **Behavioral Health Specialist** who can help your family with:
 - Health and family coaching
 - Child development support
 - Social and emotional support

Why did you sign a consent form?

As your child's primary care provider, we want to be informed about the care your child receives so that we can provide the best care possible. The consent you signed allows the programs to share information back to us. Different programs have different consent requirements, which is why you may need to sign multiple forms.

Any Questions?

At COPA, we are here to support you and your child. If you have questions about this process or if you haven't heard from the agency you were referred in two weeks please call us! **541-389-6313**

Follow-Up to Screening: How We Can Support Your Child

Why did we have you complete a questionnaire about your child's development?

Our goal is to help young brains and bodies develop and grow to their fullest potential. These support services can help prepare your child for kindergarten and beyond.

National recommendations call for specific tools to be used to assess a child's development, such as the one you completed. This tool helps identify kids who may be at-risk for delays. It is important to identify these delays early, as there are services that can address them.



Based on the results, we are referring your child to the services checked below:

Early Intervention (EI)

EI helps babies and toddlers with their development. In your area, High Desert Education Service District (HDES D) runs the EI program.

EI focuses on helping young children learn skills. EI services enhance language, social and physical development through play based interventions and parent coaching.

There is no charge (it is free) to families for EI services.

What to expect if your child was referred to EI:

- HDES D will call you to set up an appointment for their team to assess your child.
- If you miss their call, you should call back to schedule a time for the evaluation. They have a limited time to set up the appointment.
- Your county's Service Center will schedule your EI evaluation:
 - **Deschutes and Crook Service Centers schedule evaluations** Monday-Friday.
 - **Jefferson schedules evaluations** on Tuesday, Wednesday and Thursdays at 9, 11 or 1

The results from their assessment will be used to determine whether or not EI can provide services for your child.

Contact Information:

HDES D Intake Coordinator
Deschutes/Crook: 541-312-1947
Jefferson: 541-693-5740
www.hdesd.org

Family Support Services

Family Support Services, through programs like CaCoon and Babies First!, use public health nurses to work with your family to support your child's health and development. A nurse will meet with you in your home, or wherever works best for you and your child.

There is no charge (it is free) to families for these services.

What to expect if your child is referred to Family Support Services:

A nurse will come to you, at a time and place that works and provide services such as:

- Weigh baby or child and screen for normal development
- Provide information and connection to community based resources
- Make sure your child's health team works well together. The team is made up of your family and the professionals involved.

Contact Information:

Deschutes: 541-322-7448
Jefferson: 541-475-4456
Crook: 541-447-5165

<https://www.ohsu.edu/xd/outreach/occyshn/programs-projects/cacoon.cfm>

Medical & Therapy Services

- **Speech Language Pathologist:** Specializes in speech, voice, and swallowing disorders
- **Audiologist:** Specializes in hearing and balance concerns
- **Occupational Therapist:** Specialize in performance activities necessary for daily life
- **Physical Therapist:** Specializes in range of movement and physical coordination
- **Developmental-Behavioral Pediatrician:** Specializes in the following child development areas: Learning delays, feeding problems, behavior concern, delayed development in speech, motor, or cognitive skills
- **Pediatric Psychologist:** Specializes in neuropsychological assessment, which are an in-depth assessment of skills and abilities in areas as attention, problem solving, language, behaviors and self-regulation.
- **Autism Specialist:** Specializes in providing a diagnosis and treatment plan for children with symptoms of Autism

Why did you sign a consent form?

As your child's primary care provider, we want to be informed about the care your child receives so that we can provide the best care possible. The consent you signed allows the programs to share information back to us. Different programs have different consent requirements, which is why you may need to sign multiple forms.

Any Questions?

At Mosaic, we are here to support you and your child. If you have questions about this process or if you haven't heard from the agency you were referred in two weeks please call us! **541-383-3005**

Within Mosaic East Bend:

- **Behavioral Health Specialist** who can help your family with:
 - Health and family coaching
 - Child development support
 - Social and emotional support

Seguimiento al Chequeo Médico: ¿Cómo podemos ayudar a su hijo?

¿Por qué le pedimos que llene un cuestionario sobre el desarrollo de su hijo?

Nuestra meta es ayudar a desarrollar al cuerpo y el cerebro de los niños para que puedan alcanzar todo su potencial. Estos servicios de ayuda y apoyo pueden ayudarle a preparar a su hijo para el kinder y los años siguientes.

Las recomendaciones nacionales de la Academia Americana de Padiatría indican que ciertas técnicas sean usadas para asesorar el desarrollo de los niños, así como el cuestionario que usted ha completado. Ésta técnica ayuda a identificar a niños que pudieran estar en riesgo de retraso. Es importante poder identificar temprano estos retrasos, ya que hay servicios disponibles que pueden ayudarle.



Basado en estos resultados, estamos recomendándole a su hijo/a los siguientes servicios que están indicados abajo:

Early Intervention (E.I.)

(Intervención Temprana)

E.I. ayuda a los bebés y niños pequeños en su desarrollo. En su área, Servicios de Educación del Distrito del Desierto Alto (HDESD) ejecuta el programa de E.I.

E.I. se enfoca en ayudar a niños pequeños a aprender habilidades. Los servicios de E.I. mejoran el desarrollo del lenguaje, social y físico por medio de intervenciones basadas en juegos y entrenamiento de los padres.

No hay cobros, los servicios de E.I. son gratuitos para las familias.

¿Qué es lo que pudiera esperar si su hijo/a fue recomendado/a para E.I.?

- HDESD le llamará para hacer una cita con su equipo para evaluar a su hijo.
- Si tiene una llamada perdida, debería de devolver la llamada para hacer una cita para la evaluación.
- El centro de servicio de su condado programará su evaluación de E.I.:

- Los centros de servicios de Deschutes y Crook programarán las evaluaciones de lunes a viernes.
- Jefferson programa las evaluaciones en los martes, miércoles y jueves a las 9, 11 o 1

Los resultados de la evaluación se utilizarán para determinar si el E.I. puede ofrecerle servicios a su hijo.

Información de contacto:

Coordinador de Admisión de HDESD
Deschutes/Crook: 541-312-1947
Jefferson: 541-693-5740
www.hdesd.org

Servicios de Apoyo Familiar

Los Servicios de Apoyo Familiar, a través de programas como CaCoon y Babies First! utilizan enfermeras de salud pública para trabajar con su familia para apoyar la salud y el desarrollo de su hijo.

No hay cobros, los servicios de E.I. son gratuitos para las familias.

¿Qué es lo que pudiera esperar si su hijo/a fue recomendado/a para Servicios de Apoyo Familiar?

Una enfermera acudirá a usted, en un momento y lugar que funcione y le brinde servicios como:

- Pesar al bebé o al niño y evaluar el desarrollo normal
- Brindar información y conexión a recursos comunitarios
- Asegúrese de que el equipo de salud de su hijo trabaje bien juntos. El equipo está formado por su familia y los profesionales involucrados.

Información de contacto:

Deschutes | 541-322-7448
Jefferson | 541-475-4456
Crook | 541-447-5165

<http://www.ohsu.edu/xd/outreach/occyshn/programs-projects/cacoon.cfm>

En Mosaic Pediatrics...

En la mayoría de las oficinas de Mosaic Pediatrics, tenemos un especialista en salud del comportamiento que puede ayudar a su familia con:

- Salud y coaching familiar
- Apoyo al desarrollo infantil
- Apoyo social y emocional

Servicios Médicos y Terapéuticos

Patólogo del lenguaje y el habla (Speech Language Pathologist): Especialistas en trastornos del habla, del lenguaje y de la deglución.

Audiólogo (Audiologist): Especialistas en problemas auditivos y del equilibrio.

Terapeuta ocupacional (Occupational Therapist): Especialista en el rendimiento de actividades necesarias para la vida diaria.

Terapeuta físico (Physical Therapist): Especialista en rango de movimiento y coordinación física.

Los pediatras de desarrollo conductual (Developmental-Behavioral Pediatrician): Especialistas en las siguientes áreas del desarrollo del niño: retrasos de aprendizaje, problemas de alimentación, problemas de conducta, retraso en el desarrollo del habla, destrezas motoras o cognitivas.

Servicios de salud de comportamiento (Child Behavioral Health Services): Especializados en valoraciones de salud mental, consejería individual/familiar/en grupo, entrenamiento de habilidades e intervención de crisis.

Especialista en autismo (Autism Specialist): Especialista en proveer una diagnosis y plan de tratamiento para niños/as con síntomas de autismo.

¿Tiene alguna pregunta?

En Mosaic, estamos aquí para ayudar a usted y a su hijo. Si tiene preguntas sobre éste proceso, ¡por favor llámenos!

Número de teléfono: 541-383-3005

¿Por qué firmó un formulario de consentimiento?

Cómo proveedor médico de atención primaria de su hijo, queremos estar informados sobre el cuidado que recibe su hijo/a para poder ofrecerle el mejor cuidado posible. El formulario de consentimiento que usted firmó permite que los programas nos compartan la información. Diferentes programas tienen diferentes requisitos de consentimiento. Para que los diferentes proveedores puedan comunicarse sobre el cuidado de su hijo, probablemente le pedirán que firme más de un permiso.

Follow-Up to Screening: How We Can Support Your Child

Why did we have you complete a questionnaire about your child's development?

Our goal is to help young brains and bodies develop and grow to their fullest potential. These support services can help prepare your child for kindergarten and beyond.

National recommendations call for specific tools to be used to assess a child's development, such as the one you completed. This tool helps identify kids who may be at-risk for delays. It is important to identify these delays early, as there are services that can address them.



Based on the results, we are referring your child to the services checked below:

Early Intervention (EI)

EI helps babies and toddlers with their development. In your area, High Desert Education Service District (HDES) runs the EI program.

EI focuses on helping young children learn skills. EI services enhance language, social and physical development through play based interventions and parent coaching.

There is no charge (it is free) to families for EI services.

What to expect if your child was referred to EI:

- HDES will call you to set up an appointment for their team to assess your child.
- If you miss their call, you should call back to schedule a time for the evaluation. They have a limited time to set up the appointment.
- Your county's Service Center will schedule your EI evaluation:
 - **Deschutes and Crook Service Centers schedule evaluations** Monday-Friday.
 - **Jefferson schedules evaluations** on Tuesday, Wednesday and Thursdays at 9, 11 or 1

The results from their assessment will be used to determine whether or not EI can provide services for your child.

Contact Information:

HDES Intake Coordinator
Deschutes/Crook: 541-312-1947
Jefferson: 541-693-5740
www.hdesd.org

Family Support Services

Family Support Services, through programs like CaCoon and Babies First!, use public health nurses to work with your family to support your child's health and development. A nurse will meet with you in your home, or wherever works best for you and your child.

There is no charge (it is free) to families for these services.

What to expect if your child is referred to Family Support Services:

A nurse will come to you, at a time and place that works and provide services such as:

- Weigh baby or child and screen for normal development
- Provide information and connection to community based resources
- Make sure your child's health team works well together. The team is made up of your family and the professionals involved.

Contact Information:

Deschutes: 541-322-7448
Jefferson: 541-475-4456
Crook: 541-447-5165

<https://www.ohsu.edu/xd/outreach/occyshn/programs-projects/cacoon.cfm>

Medical & Therapy Services

- **Speech Language Pathologist:** Specializes in speech, voice, and swallowing disorders
- **Audiologist:** Specializes in hearing and balance concerns
- **Occupational Therapist:** Specialize in performance activities necessary for daily life
- **Physical Therapist:** Specializes in range of movement and physical coordination
- **Developmental-Behavioral Pediatrician:** Specializes in the following child development areas: Learning delays, feeding problems, behavior concern, delayed development in speech, motor, or cognitive skills
- **Pediatric Psychologist:** Specializes in neuropsychological assessment, which are an in-depth assessment of skills and abilities in areas as attention, problem solving, language, behaviors and self-regulation.
- **Autism Specialist:** Specializes in providing a diagnosis and treatment plan for children with symptoms of Autism

Why did you sign a consent form?

As your child's primary care provider, we want to be informed about the care your child receives so that we can provide the best care possible. The consent you signed allows the programs to share information back to us. Different programs have different consent requirements, which is why you may need to sign multiple forms.

Any Questions?

At Madras Medical Group, we are here to support you and your child. If you have questions about this process or if you haven't heard from the agency you were referred in two weeks please call us! **(541) 475-3874**

Seguimiento al Chequeo Médico: ¿Cómo podemos ayudar a su hijo?

¿Por qué le pedimos que llene un cuestionario sobre el desarrollo de su hijo?

Nuestra meta es ayudar a desarrollar al cuerpo y el cerebro de los niños para que puedan alcanzar todo su potencial. Estos servicios de ayuda y apoyo pueden ayudarle a preparar a su hijo para el kinder y los años siguientes.

Las recomendaciones nacionales de la Academia Americana de Padiatría indican que ciertas técnicas sean usadas para asesorar el desarrollo de los niños, así como el cuestionario que usted ha completado. Ésta técnica ayuda a identificar a niños que pudieran estar en riesgo de retraso. Es importante poder identificar temprano estos retrasos, ya que hay servicios disponibles que pueden ayudarle.



Basado en estos resultados, estamos recomendándole a su hijo/a los siguientes servicios que están indicados abajo:

Early Intervention (E.I.)

(Intervención Temprana)

E.I. ayuda a los bebés y niños pequeños en su desarrollo. En su área, Servicios de Educación del Distrito del Desierto Alto (HDESD) ejecuta el programa de E.I.

E.I. se enfoca en ayudar a niños pequeños a aprender habilidades. Los servicios de E.I. mejoran el desarrollo del lenguaje, social y físico por medio de intervenciones basadas en juegos y entrenamiento de los padres.

No hay cobros, los servicios de E.I. son gratuitos para las familias.

¿Qué es lo que pudiera esperar si su hijo/a fuese recomendado/a para E.I.?

- HDESD le llamaría para hacer una cita con su equipo para evaluar a su hijo.
- Si tiene una llamada perdida, debería de devolver la llamada para hacer una cita para la evaluación.
- El centro de servicio de su condado programará su evaluación de E.I.:
 - Los centros de servicio de Deschutes y Crook programarán las evaluaciones de lunes a viernes.
 - Jefferson programa las evaluaciones los martes, miércoles y jueves a las 9, 11 o 1

Los resultado de la evaluación se utilizarán para determinar si el E.I. puede ofrecerle servicios a su hijo.

Información de contacto:

Coordinador de Admisión de HDESD
Deschutes/Crook: 541-312-1947
Jefferson: 541-693-5740
www.hdesd.org

Servicios de Apoyo Familiar

Servicios de apoyo familiar es un programa de enfermeros de salud pública que ayudan a las familias. Los enfermeros de salud pública trabajan con su familia para ayudar con la salud y desarrollo de su hijo. Un enfermero de CaCoon le visitará a su casa o donde usted o su hijo prefieran reunirse. No hay cargos, los servicios de CaCoon son gratuitos para las familias.

Qué esperar si su hijo es referido a los Servicios de apoyo familiar:

Una enfermera vendrá a usted, en un momento y lugar que trabaje y le brindará servicios tales como:

- Pesar al bebé o niño y evaluar su desarrollo normal
- Brindar información y conexión con los recursos comunitarios
- Asegúrese de que el equipo de salud de su hijo trabaje bien en conjunto. El equipo está formado por su familia y los profesionales implicados.

Información de contacto:

Deschutes: 541-322-7448

Crook: 541-447-5165

Jefferson: 541-475-4456

<https://www.ohsu.edu/xd/outreach/occyshn/programs-projects/cacoon.cfm>

Servicios Médicos y Terapéuticos

Patólogo del lenguaje y el habla (Speech Language Pathologist): Especialistas en trastornos del habla, del lenguaje y de la deglución.

Audiólogo (Audiologist): Especialistas en problemas auditivos y del equilibrio.

Terapeuta ocupacional (Occupational Therapist): Especialista en el rendimiento de actividades necesarias para la vida diaria.

Terapeuta físico (Physical Therapist): Especialista en rango de movimiento y coordinación física.

Evaluación del desarrollo que puede incluir:

Los pediatras de desarrollo conductual (Developmental-Behavioral Pediatrician): Especialistas en las siguientes áreas del desarrollo del niño: retrasos de aprendizaje, problemas de alimentación, problemas de conducta, retraso en el desarrollo del habla, destrezas motoras o cognitivas.

Servicios de salud de comportamiento (Child Behavioral Health Services): Especializados en valoraciones de salud mental, consejería individual/familiar/en grupo, entrenamiento de habilidades e intervención de crisis.

Especialista en autismo (Autism Specialist): Especialista en proveer una diagnosis y plan de tratamiento para niños/as con síntomas de autismo.

¿Tiene alguna pregunta?

En Madras Medical Group, estamos aquí para ayudar a usted y a su hijo. Si tiene preguntas sobre éste proceso, ¡por favor llámenos!

Número de teléfono: 541-475-3874

Follow-Up to Screening: How We Can Support Your Child

Why did we have you complete a questionnaire about your child's development?

Our goal is to help young brains and bodies develop and grow to their fullest potential. These support services can help prepare your child for kindergarten and beyond.

National recommendations call for specific tools to be used to assess a child's development, such as the one you completed. This tool helps identify kids who may be at-risk for delays. It is important to identify these delays early, as there are services that can address them.



Based on the results, we are referring your child to the services checked below:

Early Intervention (EI)

EI helps babies and toddlers with their development. In your area, High Desert Education Service District (HDES D) runs the EI program.

EI focuses on helping young children learn skills. EI services enhance language, social and physical development through play based interventions and parent coaching.

There is no charge (it is free) to families for EI services.

What to expect if your child was referred to EI:

- HDES D will call you to set up an appointment for their team to assess your child.
- If you miss their call, you should call back to schedule a time for the evaluation. They have a limited time to set up the appointment.
- Your county's Service Center will schedule your EI evaluation:
 - **Deschutes and Crook Service Centers schedule evaluations Monday-Friday.**
 - **Jefferson schedules evaluations on Tuesday, Wednesday and Thursdays at 9, 11 or 1**

The results from their assessment will be used to determine whether or not EI can provide services for your child.

Contact Information:

HDES D Intake Coordinator
Deschutes/Crook: 541-312-1947
Jefferson: 541-693-5740
www.hdesd.org

Family Support Services

Family Support Services, through programs like CaCoon and Babies First!, use public health nurses to work with your family to support your child's health and development. A nurse will meet with you in your home, or wherever works best for you and your child.

There is no charge (it is free) to families for these services.

What to expect if your child is referred to Family Support Services:

A nurse will come to you, at a time and place that works and provide services such as:

- Weigh baby or child and screen for normal development
- Provide information and connection to community based resources
- Make sure your child's health team works well together. The team is made up of your family and the professionals involved.

Contact Information:

Deschutes: 541-322-7448
Jefferson: 541-475-4456
Crook: 541-447-5165

<https://www.ohsu.edu/xd/outreach/occyshn/programs-projects/cacoon.cfm>

Medical & Therapy Services

- **Speech Language Pathologist:** Specializes in speech, voice, and swallowing disorders
- **Audiologist:** Specializes in hearing and balance concerns
- **Occupational Therapist:** Specialize in performance activities necessary for daily life
- **Physical Therapist:** Specializes in range of movement and physical coordination
- **Developmental Evaluation Which May Include:**

Developmental-Behavioral

Pediatrician: Specializes in the following child development areas: Learning delays, feeding problems, behavior concern, delayed development in speech, motor, or cognitive skills

Pediatric Psychologist: Specializes in neuropsychological assessment, which are an in-depth assessment of skills and abilities in areas as attention, problem solving, language, behaviors and self-regulation.

Autism Specialist: Specializes in providing a diagnosis and treatment plan for children with symptoms of Autism

Why did you sign a consent form?

As your child's primary care provider, we want to be informed about the care your child receives so that we can provide the best care possible. The consent you signed allows the programs to share information back to us. Different programs have different consent requirements, which is why you may need to sign multiple forms.

Any Questions?

At St. Charles Prineville, we are here to support you and your child. If you have questions about this process or if you haven't heard from the agency you were referred in two weeks please call us! **(541) 447-6254**



Tool #4: Phone Follow-Up Script for Children Referred to Early Intervention

Some studies show that people make a decision in the first 48 hours on referral. Colleagues focused on follow-up to developmental screening in Illinois found that calling parents within that window increased parent access of referrals for their children

Given that across the three counties, nearly 2 in five children EI was unable to engage and get the family in for referral, better supported referrals was a focus of the improvement effort. OPIP modified the script developed by Illinois for the primary care sites and for the Early Intervention staff in county.

A general and customizable version is provided on the following page. These phone calls can be used to help identify barriers to following through with and evaluation. Below is a sample script that could be used to facilitate the phone call.

Tools Developed Through This Project Provided On the Following Pages:

Sample Phone Follow Up Script	21
-------------------------------	----

Phone Follow Up within 36 Hours

Hello- May I speak with (name of patient's primary caregiver). My name is (your name) and I'm Dr. XX's (whatever your position is). Your son / daughter, (Name of child) had an appointment with Dr. XX on (time, date, location) for a well visit.

At your appointment, Dr. XX recommended that your child go to (Insert EI program Name i.e. Early Intervention at High Desert Education Service District - HDESD). We realize it can be overwhelming to get a lot of information about next steps at your appointment, so I wanted to call and answer any questions that you have may have had come up since then.

So what questions do you have about why Dr. XX wanted (insert child's name) to go to Early Intervention at High Desert Education Service District, or about what will happen next?

Answer questions (frequent questions or concerns highlighted in blue)

- When completing the referral, you were asked to sign the *consent form*. This gives Early Intervention permission to share information about the evaluation back to us. This helps us to provide the best care for (insert child name)
- *Why go to EI/ What does EI do*: At the appointment High Desert Education Service District will be doing a more detailed evaluation of (insert child's name) development. Then, based on their assessment they will help us understand what we can do to support (insert child's name) and whether your child may benefit from services.

Can you think of any barriers that might come up for you and your family in getting (insert child's name) to these services?

Are there any other questions that you have or anything else I can do to help you in getting to these appointments?

If **no further questions**: Great. You should be getting a call from the Early Intervention Coordinator, her name is:

- Mary - Deschutes and Crook
- Bekki – Jefferson
- Laura – Warm Springs

to schedule an appointment. If you would like to call to schedule at a time that works for you, the best number is:

- Deschutes - 541.312.1195
- Crook - 541.693.5630
- Jefferson - 541.693.5740
- Warm Springs - 541.553.3241

We are here to support you, so if you have any questions, feel free to contact (insert name) at (phone number).